

CYYR1 Antibody (C-term)

Affinity Purified Rabbit Polyclonal Antibody (Pab)

Catalog # AP20136b

Product Information

Application	WB, E
Primary Accession	Q96J86
Other Accession	NP_443186.1
Reactivity	Human
Host	Rabbit
Clonality	Polyclonal
Isotype	Rabbit IgG
Clone Names	RB32666
Calculated MW	16626
Antigen Region	96-124

Additional Information

Gene ID	116159
Other Names	Cysteine and tyrosine-rich protein 1, Proline-rich domain-containing protein, CYYR1, C21orf95
Target/Specificity	This CYYR1 antibody is generated from rabbits immunized with a KLH conjugated synthetic peptide between 96-124 amino acids from the C-terminal region of human CYYR1.
Dilution	WB~~1:1000 E~~Use at an assay dependent concentration.
Format	Purified polyclonal antibody supplied in PBS with 0.09% (W/V) sodium azide. This antibody is purified through a protein A column, followed by peptide affinity purification.
Storage	Maintain refrigerated at 2-8°C for up to 2 weeks. For long term storage store at -20°C in small aliquots to prevent freeze-thaw cycles.
Precautions	CYYR1 Antibody (C-term) is for research use only and not for use in diagnostic or therapeutic procedures.

Protein Information

Name	CYYR1
Synonyms	C21orf95
Cellular Location	Membrane; Single-pass type I membrane protein

Tissue Location

Widely expressed.

Background

The function of this protein is unknown.

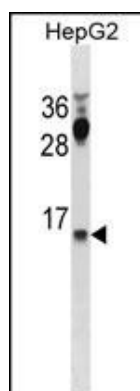
References

Vitale, L., et al. BMC Cancer 7, 66 (2007) :

Reymond, A., et al. Genomics 79(6):824-832(2002)

Vitale, L., et al. Gene 290 (1-2), 141-151 (2002) :

Images



CYR1 Antibody (C-term) (Cat. #AP20136b) western blot analysis in HepG2 cell line lysates (35ug/lane). This demonstrates the CYR1 antibody detected the CYR1 protein (arrow).

Please note: All products are 'FOR RESEARCH USE ONLY. NOT FOR USE IN DIAGNOSTIC OR THERAPEUTIC PROCEDURES'.