

# IL28RA Antibody (C-term)

Affinity Purified Rabbit Polyclonal Antibody (Pab)

Catalog # AP20138b

## Product Information

---

|                          |                             |
|--------------------------|-----------------------------|
| <b>Application</b>       | WB, E                       |
| <b>Primary Accession</b> | <a href="#">Q8IU57</a>      |
| <b>Other Accession</b>   | <a href="#">NP_734464.1</a> |
| <b>Reactivity</b>        | Human                       |
| <b>Host</b>              | Rabbit                      |
| <b>Clonality</b>         | Polyclonal                  |
| <b>Isotype</b>           | Rabbit IgG                  |
| <b>Clone Names</b>       | RB33105                     |
| <b>Calculated MW</b>     | 57653                       |
| <b>Antigen Region</b>    | 485-513                     |

## Additional Information

---

|                           |  |
|---------------------------|--|
| <b>Gene ID</b>            | 163702   |
| <b>Other Names</b>        | Interferon lambda receptor 1, IFN-lambda receptor 1, IFN-lambda-R1, Cytokine receptor class-II member 12, Cytokine receptor family 2 member 12, CRF2-12, Interleukin-28 receptor subunit alpha, IL-28 receptor subunit alpha, IL-28R-alpha, IL-28RA, Likely interleukin or cytokine receptor 2, LICR2, IFNLR1, IL28RA, LICR2 |
| <b>Target/Specificity</b> | This IL28RA antibody is generated from rabbits immunized with a KLH conjugated synthetic peptide between 485-513 amino acids of human IL28RA.  |
| <b>Dilution</b>           | WB~~1:1000 E~~Use at an assay dependent concentration.   |
| <b>Format</b>             | Purified polyclonal antibody supplied in PBS with 0.09% (W/V) sodium azide. This antibody is purified through a protein A column, followed by peptide affinity purification.   |
| <b>Storage</b>            | Maintain refrigerated at 2-8°C for up to 2 weeks. For long term storage store at -20°C in small aliquots to prevent freeze-thaw cycles.  |
| <b>Precautions</b>        | IL28RA Antibody (C-term) is for research use only and not for use in diagnostic or therapeutic procedures.   |

## Protein Information

---

|                 |               |
|-----------------|---------------|
| <b>Name</b>     | IFNLR1        |
| <b>Synonyms</b> | IL28RA, LICR2 |

|                          |  |
|--------------------------|--|
| <b>Function</b>          | The IFNLR1/IL10RB dimer is a receptor for the cytokine ligands IFNL2 and IFNL3 and mediates their antiviral activity. The ligand/receptor complex stimulate the activation of the JAK/STAT signaling pathway leading to the expression of IFN-stimulated genes (ISG), which contribute to the antiviral state. Determines the cell type specificity of the lambda interferon action. Shows a more restricted pattern of expression in the epithelial tissues thereby limiting responses to lambda interferons primarily to epithelial cells of the respiratory, gastrointestinal, and reproductive tracts. Seems not to be essential for early virus-activated host defense in vaginal infection, but plays an important role in Toll-like receptor (TLR)- induced antiviral defense. Plays a significant role in the antiviral immune defense in the intestinal epithelium. |
| <b>Cellular Location</b> | Membrane; Single-pass type I membrane protein  |
| <b>Tissue Location</b>   | Widely expressed.  |

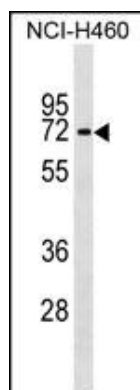
## Background

The protein encoded by this gene belongs to the class II cytokine receptor family. This protein forms a receptor complex with interleukine 10 receptor, beta (IL10RB). The receptor complex has been shown to interact with three closely related cytokines, including interleukin 28A (IL28A), interleukin 28B (IL28B), and interleukin 29 (IL29). The expression of all three cytokines can be induced by viral infection. The cells overexpressing this protein have been found to have enhanced responses to IL28A and IL29, but decreased response to IL28B. Three alternatively spliced transcript variants encoding distinct isoforms have been reported. [provided by RefSeq].

## References

Davila, S., et al. Genes Immun. 11(3):232-238(2010)  
 Magracheva, E., et al. Acta Crystallogr. Sect. F Struct. Biol. Cryst. Commun. 66 (PT 1), 61-63 (2010) :  
 Witte, K., et al. Genes Immun. 10(8):702-714(2009)  
 Laje, G., et al. Pharmacogenet. Genomics 19(9):666-674(2009)  
 Trynka, G., et al. Gut 58(8):1078-1083(2009)

## Images



IL28RA Antibody (C-term) (Cat. #AP20138b) western blot analysis in NCI-H460 cell line lysates (35ug/lane). This demonstrates the IL28RA antibody detected the IL28RA protein (arrow).

Please note: All products are 'FOR RESEARCH USE ONLY. NOT FOR USE IN DIAGNOSTIC OR THERAPEUTIC PROCEDURES'.