

SH3BGRL Antibody (Center)

Affinity Purified Rabbit Polyclonal Antibody (Pab)

Catalog # AP20144c

Product Information

Application	WB, E
Primary Accession	Q75368
Other Accession	Q4R7R5 , Q58DU7 , NP_003013.1
Reactivity	Human
Predicted	Bovine, Monkey
Host	Rabbit
Clonality	Polyclonal
Isotype	Rabbit IgG
Clone Names	RB39860
Calculated MW	12774
Antigen Region	35-63

Additional Information

Gene ID	6451
Other Names	SH3 domain-binding glutamic acid-rich-like protein, SH3BGRL
Target/Specificity	This SH3BGRL antibody is generated from rabbits immunized with a KLH conjugated synthetic peptide between 35-63 amino acids from the Central region of human SH3BGRL.
Dilution	WB~~1:1000 E~~Use at an assay dependent concentration.
Format	Purified polyclonal antibody supplied in PBS with 0.09% (W/V) sodium azide. This antibody is purified through a protein A column, followed by peptide affinity purification.
Storage	Maintain refrigerated at 2-8°C for up to 2 weeks. For long term storage store at -20°C in small aliquots to prevent freeze-thaw cycles.
Precautions	SH3BGRL Antibody (Center) is for research use only and not for use in diagnostic or therapeutic procedures.

Protein Information

Name	SH3BGRL {ECO:0000303 PubMed:9642120}
Function	Appears to function as an adapter protein that bridges proteins together or proteins with mRNAs (PubMed: 34331014). May function as a ubiquitin ligase-substrate adapter (PubMed: 34331014 , PubMed: 34870550).

Additionally, associates with translating cytoplasmic ribosomes and may promote the expression of specific mRNAs (PubMed:[34331014](#), PubMed:[34870550](#)).

Cellular Location	Cytoplasm, cytosol. Cell membrane
Tissue Location	Ubiquitous..

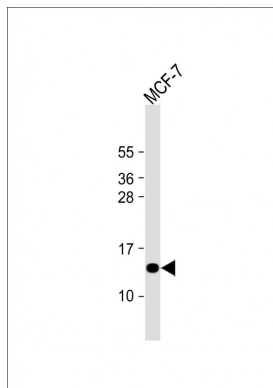
Background

The function of this protein is unknown.

References

Naukkarinen, J., et al. PLoS Genet. 6 (6), E1000976 (2010) :
Majid, S.M., et al. Oncogene 25(5):756-768(2006)
Yin, L., et al. Proteins 61(1):213-216(2005)
Bruneel, A., et al. Proteomics 5(15):3876-3884(2005)
Ross, M.T., et al. Nature 434(7031):325-337(2005)

Images



Anti-SH3BGRL Antibody (Center) at 1:1000 dilution + MCF-7 whole cell lysate Lysates/proteins at 20 µg per lane. Secondary Goat Anti-Rabbit IgG, (H+L), Peroxidase conjugated at 1/10000 dilution. Predicted band size : 13 kDa Blocking/Dilution buffer: 5% NFDM/TBST.

Please note: All products are 'FOR RESEARCH USE ONLY. NOT FOR USE IN DIAGNOSTIC OR THERAPEUTIC PROCEDURES'.