

MMEL1 Antibody (N-term)

Affinity Purified Rabbit Polyclonal Antibody (Pab)

Catalog # AP20146a

Product Information

Application	WB, E
Primary Accession	Q495T6
Other Accession	NP_258428.2
Reactivity	Human
Host	Rabbit
Clonality	Polyclonal
Isotype	Rabbit IgG
Clone Names	RB40353
Calculated MW	89367
Antigen Region	50-78

Additional Information

Gene ID	79258
Other Names	Membrane metallo-endopeptidase-like 1, Membrane metallo-endopeptidase-like 2, NEP2(m), Neprilysin II, NEPII, Neprilysin-2, NEP2, NL2, Membrane metallo-endopeptidase-like 1, soluble form, Neprilysin-2 secreted, NEP2(s), MMEL1, MELL1, MMEL2, NEP2
Target/Specificity	This MMEL1 antibody is generated from rabbits immunized with a KLH conjugated synthetic peptide between 50-78 amino acids from the N-terminal region of human MMEL1.
Dilution	WB~~1:1000 E~~Use at an assay dependent concentration.
Format	Purified polyclonal antibody supplied in PBS with 0.09% (W/V) sodium azide. This antibody is purified through a protein A column, followed by peptide affinity purification.
Storage	Maintain refrigerated at 2-8°C for up to 2 weeks. For long term storage store at -20°C in small aliquots to prevent freeze-thaw cycles.
Precautions	MMEL1 Antibody (N-term) is for research use only and not for use in diagnostic or therapeutic procedures.

Protein Information

Name	MMEL1
Synonyms	MELL1, MMEL2, NEP2

Function	Metalloprotease involved in sperm function, possibly by modulating the processes of fertilization and early embryonic development. Degrades a broad variety of small peptides with a preference for peptides shorter than 3 kDa containing neutral bulky aliphatic or aromatic amino acid residues. Shares the same substrate specificity with MME and cleaves peptides at the same amide bond (By similarity).
Cellular Location	Membrane; Single-pass type II membrane protein. Secreted. Note=A secreted form produced by proteolytic cleavage also exists.
Tissue Location	Predominantly expressed in testis. Weakly expressed in brain, kidney and heart.

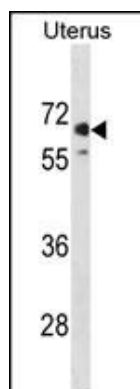
Background

The protein encoded by this gene is a member of the neutral endopeptidase (NEP) or membrane metallo-endopeptidase (MME) family. Family members play important roles in pain perception, arterial pressure regulation, phosphate metabolism and homeostasis. This protein is a type II transmembrane protein and is thought to be expressed as a secreted protein. This gene is expressed mainly in testis with weak expression in the brain, kidney, and heart.

References

van der Helm-van Mil, A.H., et al. Ann. Rheum. Dis. 69(9):1694-1696(2010)
Hirschfield, G.M., et al. Nat. Genet. 42(8):655-657(2010)
Stahl, E.A., et al. Nat. Genet. 42(6):508-514(2010)
Dubois, P.C., et al. Nat. Genet. 42(4):295-302(2010)
Jugessur, A., et al. PLoS ONE 5 (7), E11493 (2010) :

Images



MMEL1 Antibody (N-term) (Cat. #AP20146a) western blot analysis in human Uterus tissue lysates (35ug/lane). This demonstrates the MMEL1 antibody detected the MMEL1 protein (arrow).

Please note: All products are 'FOR RESEARCH USE ONLY. NOT FOR USE IN DIAGNOSTIC OR THERAPEUTIC PROCEDURES'.