

MAP2 Antibody (C-term)

Purified Rabbit Polyclonal Antibody (Pab)

Catalog # AP2018b

Product Information

Application	WB, IHC-P, E
Primary Accession	P11137
Reactivity	Human, Rat, Mouse
Host	Rabbit
Clonality	Polyclonal
Isotype	Rabbit IgG
Clone Names	RB02868
Calculated MW	199526
Antigen Region	1766-1796

Additional Information

Gene ID	4133
Other Names	Microtubule-associated protein 2, MAP-2, MAP2
Target/Specificity	This MAP2 antibody is generated from rabbits immunized with a KLH conjugated synthetic peptide between 1766-1796 amino acids from the C-terminal region of human MAP2.
Dilution	WB~~1:1000 IHC-P~~1:100~500 E~~Use at an assay dependent concentration.
Format	Purified polyclonal antibody supplied in PBS with 0.09% (W/V) sodium azide. This antibody is purified through a protein A column, followed by peptide affinity purification.
Storage	Maintain refrigerated at 2-8°C for up to 2 weeks. For long term storage store at -20°C in small aliquots to prevent freeze-thaw cycles.
Precautions	MAP2 Antibody (C-term) is for research use only and not for use in diagnostic or therapeutic procedures.

Protein Information

Name	MAP2
Function	The exact function of MAP2 is unknown but MAPs may stabilize the microtubules against depolymerization. They also seem to have a stiffening effect on microtubules.
Cellular Location	Cytoplasm, cytoskeleton. Cell projection, dendrite

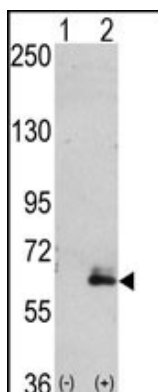
Background

This gene encodes a protein that belongs to the microtubule-associated protein family. The proteins of this family are thought to be involved in microtubule assembly, which is an essential step in neurogenesis. The exact function of this gene is still unknown. The products of similar genes in rat and mouse are neuron-specific cytoskeletal proteins that are enriched in dendrites, implicating a role in determining and stabilizing dendritic shape during neuron development.

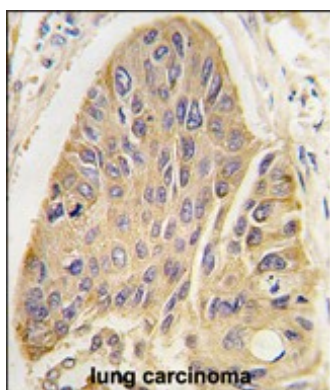
References

Lauckner, J., et al., Neurobiol. Aging 24(6):767-776 (2003).
Laurine, E., et al., J. Biol. Chem. 278(32):29979-29986 (2003).
Liu, Y., et al., Adv Anat Pathol 10(2):101-106 (2003).
DeTure, M.A., et al., J. Biol. Chem. 277(38):34755-34759 (2002).
Al-Bassam, J., et al., J. Cell Biol. 157(7):1187-1196 (2002).

Images



Western blot analysis of hMAP2-Q425 (arrow) using rabbit polyclonal hMAP2-Q425 Antibody (RB02868). 293 cell lysates (2 ug/lane) either nontransfected (Lane 1) or transiently transfected with the hMAP2-Q425 gene (Lane 2) (Origene Technologies).



Formalin-fixed and paraffin-embedded human lung carcinoma tissue reacted with hMAP2-Q425 antibody, which was peroxidase-conjugated to the secondary antibody, followed by DAB staining. This data demonstrates the use of this antibody for immunohistochemistry.

Please note: All products are 'FOR RESEARCH USE ONLY. NOT FOR USE IN DIAGNOSTIC OR THERAPEUTIC PROCEDURES'.