

Mouse Ppm1h Antibody (Center)

Affinity Purified Rabbit Polyclonal Antibody (Pab)

Catalog # AP20216c

Product Information

Application	WB, E
Primary Accession	Q3UYC0
Other Accession	Q5M821 , NP_001103688.1
Reactivity	Mouse
Predicted	Rat
Host	Rabbit
Clonality	Polyclonal
Isotype	Rabbit IgG
Clone Names	RB42379
Calculated MW	56380
Antigen Region	234-262

Additional Information

Gene ID	319468
Other Names	Protein phosphatase 1H, Ppm1h, Kiaa1157
Target/Specificity	This Mouse Ppm1h antibody is generated from rabbits immunized with a KLH conjugated synthetic peptide between 234-262 amino acids from the Central region of mouse Ppm1h.
Dilution	WB~~1:1000 E~~Use at an assay dependent concentration.
Format	Purified polyclonal antibody supplied in PBS with 0.09% (W/V) sodium azide. This antibody is purified through a protein A column, followed by peptide affinity purification.
Storage	Maintain refrigerated at 2-8°C for up to 2 weeks. For long term storage store at -20°C in small aliquots to prevent freeze-thaw cycles.
Precautions	Mouse Ppm1h Antibody (Center) is for research use only and not for use in diagnostic or therapeutic procedures.

Protein Information

Name	Ppm1h
Synonyms	Kiaa1157
Function	Dephosphorylates CDKN1B at 'Thr-187', thus removing a signal for

proteasomal degradation.

Cellular Location

Nucleus {ECO:0000250|UniProtKB:Q9ULR3}. Cytoplasm {ECO:0000250|UniProtKB:Q9ULR3}

Background

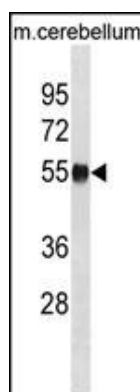
The function of this protein is unknown.

References

Coulpier, F., et al. Glia 57(13):1450-1457(2009)

Nishimura, M., et al. DNA Res. 11(5):315-323(2004)

Images



MOUSE Ppm1h Antibody (Center) (Cat. #AP20216c) western blot analysis in mouse cerebellum tissue lysates (35ug/lane). This demonstrates the MOUSE Ppm1h antibody detected the MOUSE Ppm1h protein (arrow).

Please note: All products are 'FOR RESEARCH USE ONLY. NOT FOR USE IN DIAGNOSTIC OR THERAPEUTIC PROCEDURES'.