

ANO6 Antibody (N-term)

Affinity Purified Rabbit Polyclonal Antibody (Pab)

Catalog # AP20252a

Product Information

Application	WB, E
Primary Accession	Q4KMQ2
Other Accession	NP_001020527.2
Reactivity	Human
Host	Rabbit
Clonality	Polyclonal
Isotype	Rabbit IgG
Calculated MW	106165
Antigen Region	68-96

Additional Information

Gene ID	196527
Other Names	Anoctamin-6, Small-conductance calcium-activated nonselective cation channel, SCAN channel, Transmembrane protein 16F, ANO6, TMEM16F
Target/Specificity	This ANO6 antibody is generated from rabbits immunized with a KLH conjugated synthetic peptide between 68-96 amino acids from the N-terminal region of human ANO6.
Dilution	WB~~1:1000 E~~Use at an assay dependent concentration.
Format	Purified polyclonal antibody supplied in PBS with 0.05% (V/V) Proclin 300. This antibody is purified through a protein A column, followed by peptide affinity purification.
Storage	Maintain refrigerated at 2-8°C for up to 2 weeks. For long term storage store at -20°C in small aliquots to prevent freeze-thaw cycles.
Precautions	ANO6 Antibody (N-term) is for research use only and not for use in diagnostic or therapeutic procedures.

Protein Information

Name	ANO6 (HGNC:25240)
Function	Small-conductance calcium-activated nonselective cation (SCAN) channel which acts as a regulator of phospholipid scrambling in platelets and osteoblasts (PubMed: 20056604 , PubMed: 21107324 , PubMed: 21908539 , PubMed: 22006324 , PubMed: 22946059). Phospholipid scrambling results in

surface exposure of phosphatidylserine which in platelets is essential to trigger the clotting system whereas in osteoblasts is essential for the deposition of hydroxyapatite during bone mineralization (By similarity). Has calcium-dependent phospholipid scramblase activity; scrambles phosphatidylserine, phosphatidylcholine and galactosylceramide (By similarity). Can generate outwardly rectifying chloride channel currents in airway epithelial cells and Jurkat T lymphocytes (By similarity).

Cellular Location

Cell membrane; Multi-pass membrane protein. Note=Shows an intracellular localization according to PubMed:22075693

Tissue Location

Expressed in embryonic stem cell, fetal liver, retina, chronic myelogenous leukemia and intestinal cancer

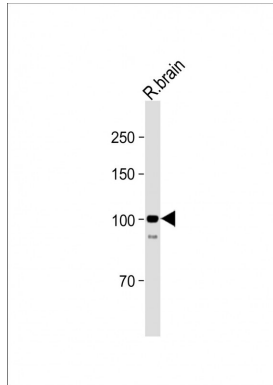
Background

May act as a calcium-activated chloride channel.

References

Rose, J. Phd, et al. Mol. Med. (2010) In press :
Hartzell, H.C., et al. J. Physiol. (Lond.) 587 (PT 10), 2127-2139 (2009) :
Katoh, M., et al. Int. J. Oncol. 24(5):1345-1349(2004)
Adams, M.D., et al. Nature 377 (6547 SUPPL), 3-174 (1995) :

Images



All lanes: Anti-ANO6 Antibody (N-term) at 1:1000 dilution + Rat brain lysate Lysates/proteins at 20 µg per lane.
Secondary: Goat Anti-Rabbit IgG, (H+L), Peroxidase conjugated (ASP1615) at 1/15000 dilution. Observed band size: 106 KDa Blocking/Dilution buffer: 5% NFDM/TBST.

Please note: All products are 'FOR RESEARCH USE ONLY. NOT FOR USE IN DIAGNOSTIC OR THERAPEUTIC PROCEDURES'.