

# OR2B6 Antibody (C-term)

Affinity Purified Rabbit Polyclonal Antibody (Pab)

Catalog # AP20256b

## Product Information

---

Application	WB, E
Primary Accession	<a href="#">P58173</a>
Other Accession	<a href="#">NP_036499.1</a>
Reactivity	Human
Host	Rabbit
Clonality	Polyclonal
Isotype	Rabbit IgG
Clone Names	RB42717
Calculated MW	35414
Antigen Region	208-236

## Additional Information

---

Gene ID	26212
Other Names	Olfactory receptor 2B6, Hs6M1-32, Olfactory receptor 2B1, Olfactory receptor 2B5, Olfactory receptor 5-40, OR5-40, Olfactory receptor 6-31, OR6-31, Olfactory receptor OR6-4, OR2B6, OR2B1, OR2B1P, OR2B5, OR2B6P
Target/Specificity	This OR2B6 antibody is generated from rabbits immunized with a KLH conjugated synthetic peptide between 208-236 amino acids from the C-terminal region of human OR2B6.
Dilution	WB~~1:1000 E~~Use at an assay dependent concentration.
Format	Purified polyclonal antibody supplied in PBS with 0.09% (W/V) sodium azide. This antibody is purified through a protein A column, followed by peptide affinity purification.
Storage	Maintain refrigerated at 2-8°C for up to 2 weeks. For long term storage store at -20°C in small aliquots to prevent freeze-thaw cycles.
Precautions	OR2B6 Antibody (C-term) is for research use only and not for use in diagnostic or therapeutic procedures.

## Protein Information

---

Name	OR2B6 ( <a href="#">HGNC:8241</a> )
Function	Odorant receptor.

## Background

---

Olfactory receptors interact with odorant molecules in the nose, to initiate a neuronal response that triggers the perception of a smell. The olfactory receptor proteins are members of a large family of G-protein-coupled receptors (GPCR) arising from single coding-exon genes. Olfactory receptors share a 7-transmembrane domain structure with many neurotransmitter and hormone receptors and are responsible for the recognition and G protein-mediated transduction of odorant signals. The olfactory receptor gene family is the largest in the genome. The nomenclature assigned to the olfactory receptor genes and proteins for this organism is independent of other organisms.

## References

---

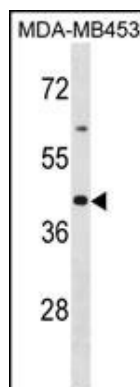
Malnic, B., et al. Proc. Natl. Acad. Sci. U.S.A. 101(8):2584-2589(2004)

Mungall, A.J., et al. Nature 425(6960):805-811(2003)

Rouquier, S., et al. Nat. Genet. 18(3):243-250(1998)

## Images

---



OR2B6 Antibody (C-term) (Cat. #AP20256b) western blot analysis in MDA-MB453 cell line lysates (35ug/lane). This demonstrates the OR2B6 antibody detected the OR2B6 protein (arrow).

Please note: All products are 'FOR RESEARCH USE ONLY. NOT FOR USE IN DIAGNOSTIC OR THERAPEUTIC PROCEDURES'.