

POLR2H Antibody (Center)

Affinity Purified Rabbit Polyclonal Antibody (Pab)

Catalog # AP20263c

Product Information

Application	WB, E
Primary Accession	P52434
Other Accession	Q923G2 , NP_006223.2
Reactivity	Human, Mouse
Predicted	Mouse
Host	Rabbit
Clonality	Polyclonal
Isotype	Rabbit IgG
Clone Names	RB42744
Calculated MW	17143
Antigen Region	59-87

Additional Information

Gene ID	5437
Other Names	DNA-directed RNA polymerases I, II, and III subunit RPABC3, RNA polymerases I, II, and III subunit ABC3, DNA-directed RNA polymerase II subunit H, DNA-directed RNA polymerases I, II, and III 171 kDa polypeptide, RPB17, RPB8 homolog, hRPB8, POLR2H
Target/Specificity	This POLR2H antibody is generated from rabbits immunized with a KLH conjugated synthetic peptide between 59-87 amino acids from the Central region of human POLR2H.
Dilution	WB~~1:1000 E~~Use at an assay dependent concentration.
Format	Purified polyclonal antibody supplied in PBS with 0.09% (W/V) sodium azide. This antibody is purified through a protein A column, followed by peptide affinity purification.
Storage	Maintain refrigerated at 2-8°C for up to 2 weeks. For long term storage store at -20°C in small aliquots to prevent freeze-thaw cycles.
Precautions	POLR2H Antibody (Center) is for research use only and not for use in diagnostic or therapeutic procedures.

Protein Information

Name	POLR2H (HGNC:9195)
------	--------------------------------------

Function	DNA-dependent RNA polymerase catalyzes the transcription of DNA into RNA using the four ribonucleoside triphosphates as substrates. Common component of RNA polymerases I, II and III which synthesize ribosomal RNA precursors, mRNA precursors and many functional non- coding RNAs, and small RNAs, such as 5S rRNA and tRNAs, respectively.
Cellular Location	Nucleus {ECO:0000269 PubMed:33335104, ECO:0000269 PubMed:9852112, ECO:0000269 Ref.6}. Nucleus, nucleolus

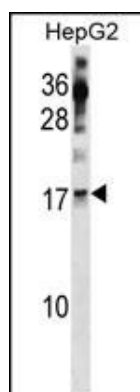
Background

This gene encodes one of the essential subunits of RNA polymerase II that is shared by the other two eukaryotic DNA-directed RNA polymerases, I and III.

References

Davila, S., et al. Genes Immun. 11(3):232-238(2010)
 Michiels, S., et al. Carcinogenesis 30(5):763-768(2009)
 Ewing, R.M., et al. Mol. Syst. Biol. 3, 89 (2007) :
 Kang, X., et al. J. Biol. Chem. 281(26):18216-18226(2006)
 Andersen, J.S., et al. Nature 433(7021):77-83(2005)

Images



POLR2H Antibody (Center) (Cat. #AP20263c) western blot analysis in HepG2 cell line lysates (35ug/lane). This demonstrates the POLR2H antibody detected the POLR2H protein (arrow).

Please note: All products are 'FOR RESEARCH USE ONLY. NOT FOR USE IN DIAGNOSTIC OR THERAPEUTIC PROCEDURES'.