

SFXN1 Antibody (C-term)

Affinity Purified Rabbit Polyclonal Antibody (Pab)

Catalog # AP20281b

Product Information

Application	WB, E
Primary Accession	Q9H9B4
Other Accession	NP_073591.2
Reactivity	Human
Host	Rabbit
Clonality	Polyclonal
Isotype	Rabbit IgG
Clone Names	RB42788
Calculated MW	35619
Antigen Region	293-321

Additional Information

Gene ID	94081
Other Names	Sideroflexin-1, Tricarboxylate carrier protein, TCC, SFXN1
Target/Specificity	This SFXN1 antibody is generated from rabbits immunized with a KLH conjugated synthetic peptide between 293-321 amino acids from the C-terminal region of human SFXN1.
Dilution	WB~~1:2000 E~~Use at an assay dependent concentration.
Format	Purified polyclonal antibody supplied in PBS with 0.09% (W/V) sodium azide. This antibody is purified through a protein A column, followed by peptide affinity purification.
Storage	Maintain refrigerated at 2-8°C for up to 2 weeks. For long term storage store at -20°C in small aliquots to prevent freeze-thaw cycles.
Precautions	SFXN1 Antibody (C-term) is for research use only and not for use in diagnostic or therapeutic procedures.

Protein Information

Name	SFXN1 (HGNC:16085)
Function	Amino acid transporter importing serine, an essential substrate of the mitochondrial branch of the one-carbon pathway, into mitochondria. Mitochondrial serine is then converted to glycine and formate, which exits to the cytosol where it is used to generate the charged folates that serve as

one-carbon donors (PubMed:[30442778](#)). May also transport other amino acids including alanine and cysteine (PubMed:[30442778](#)).

Cellular Location

Mitochondrion inner membrane; Multi-pass membrane protein

Tissue Location

Highly expressed in tissues with high one-carbon metabolism activity, such as blood, liver and kidney

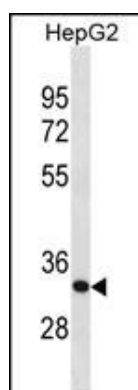
Background

Might be involved in the transport of a component required for iron utilization into or out of the mitochondria.

References

Ewing, R.M., et al. Mol. Syst. Biol. 3, 89 (2007) :
Siculella, L., et al. FEBS Lett. 578(3):280-284(2004)
Siculella, L., et al. J. Lipid Res. 45(7):1333-1340(2004)
Giudetti, A.M., et al. J. Lipid Res. 44(11):2135-2141(2003)
Miyake, S., et al. Biochem. Biophys. Res. Commun. 295(2):463-468(2002)

Images



SFXN1 Antibody (C-term) (Cat. #AP20281b) western blot analysis in HepG2 cell line lysates (35ug/lane). This demonstrates the SFXN1 antibody detected the SFXN1 protein (arrow).

Please note: All products are 'FOR RESEARCH USE ONLY. NOT FOR USE IN DIAGNOSTIC OR THERAPEUTIC PROCEDURES'.