

TMEM199 Antibody (N-term)

Affinity Purified Rabbit Polyclonal Antibody (Pab)

Catalog # AP20289a

Product Information

Application	WB, E
Primary Accession	Q8N511
Reactivity	Human, Mouse
Host	Rabbit
Clonality	Polyclonal
Isotype	Rabbit IgG
Calculated MW	23130
Antigen Region	46-75

Additional Information

Gene ID	147007
Other Names	Transmembrane protein 199, TMEM199, C17orf32
Target/Specificity	This TMEM199 antibody is generated from rabbits immunized with a KLH conjugated synthetic peptide between 46-75 amino acids from the N-terminal region of human TMEM199.
Dilution	WB~~1:1000 E~~Use at an assay dependent concentration.
Format	Purified polyclonal antibody supplied in PBS with 0.09% (W/V) sodium azide. This antibody is purified through a protein A column, followed by peptide affinity purification.
Storage	Maintain refrigerated at 2-8°C for up to 2 weeks. For long term storage store at -20°C in small aliquots to prevent freeze-thaw cycles.
Precautions	TMEM199 Antibody (N-term) is for research use only and not for use in diagnostic or therapeutic procedures.

Protein Information

Name	VMA12 (HGNC:18085)
Function	Accessory component of the proton-transporting vacuolar (V)- ATPase protein pump involved in intracellular iron homeostasis. In aerobic conditions, required for intracellular iron homeostasis, thus triggering the activity of Fe(2+) prolyl hydroxylase (PHD) enzymes, and leading to HIF1A hydroxylation and subsequent proteasomal degradation. Necessary for endolysosomal acidification and lysosomal degradation (PubMed: 28296633).

May be involved in Golgi homeostasis (PubMed:[26833330](#)). Binds 20(S)-hydroxycholesterol (20(S)-OHC) (By similarity).

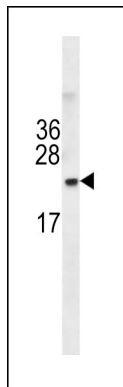
Cellular Location

Cytoplasmic vesicle, COPI-coated vesicle membrane; Multi-pass membrane protein. Endoplasmic reticulum-Golgi intermediate compartment membrane; Multi-pass membrane protein. Endoplasmic reticulum membrane; Multi-pass membrane protein. Note=Partial colocalization with GOLGB1

Background

The function of this protein remains unknown.

Images



TMEM199 Antibody (N-term) (Cat. #AP20289a) western blot analysis in A549,293,U251 cell line lysates (35ug/lane).This demonstrates the TMEM199 antibody detected the TMEM199 protein (arrow).

Please note: All products are 'FOR RESEARCH USE ONLY. NOT FOR USE IN DIAGNOSTIC OR THERAPEUTIC PROCEDURES'.