

CXorf41 Antibody (C-term)

Affinity Purified Rabbit Polyclonal Antibody (Pab)

Catalog # AP20291b

Product Information

Application	WB, E
Primary Accession	Q9NQM4
Reactivity	Human
Host	Rabbit
Clonality	Polyclonal
Isotype	Rabbit IgG
Clone Names	RB27671
Calculated MW	24069
Antigen Region	171-199

Additional Information

Gene ID	139212
Other Names	Protein PIH1D3, PIH1 domain-containing protein 3, Sarcoma antigen NY-SAR-97, PIH1D3, CXorf41
Target/Specificity	This CXorf41 antibody is generated from rabbits immunized with a KLH conjugated synthetic peptide between 171-199 amino acids from the C-terminal region of human CXorf41.
Dilution	WB~~1:1000 E~~Use at an assay dependent concentration.
Format	Purified polyclonal antibody supplied in PBS with 0.09% (W/V) sodium azide. This antibody is purified through a protein A column, followed by peptide affinity purification.
Storage	Maintain refrigerated at 2-8°C for up to 2 weeks. For long term storage store at -20°C in small aliquots to prevent freeze-thaw cycles.
Precautions	CXorf41 Antibody (C-term) is for research use only and not for use in diagnostic or therapeutic procedures.

Protein Information

Name	DNAAF6 (HGNC:28570)
Function	Plays a role in cytoplasmic pre-assembly of axonemal dynein.
Cellular Location	Cytoplasm. Golgi apparatus, trans-Golgi network Note=Localized to the cytoplasm of spermatogenic cells {ECO:0000250 UniProtKB:Q3KNI6}

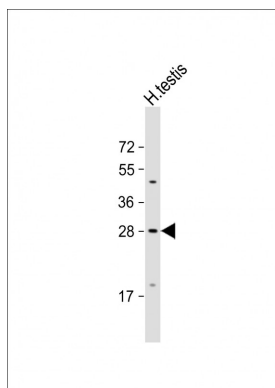
Tissue Location

Expressed in testis, small intestine, prostate, adrenal gland, spleen, lung, bladder, breast and ovary. Expressed in ciliated epithelial cells (PubMed:28176794)

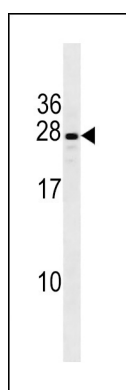
Background

The function of this protein remains unknown.

Images



Anti-CXorf41 Antibody (C-term) at 1:1000 dilution + human testis lysate Lysates/proteins at 20 µg per lane. Secondary Goat Anti-Rabbit IgG, (H+L), Peroxidase conjugated at 1/10000 dilution. Predicted band size : 24 kDa Blocking/Dilution buffer: 5% NFDM/TBST.



CXorf41 Antibody (C-term) (Cat. #AP20291b) western blot analysis in NCI-H460 cell line lysates (35ug/lane). This demonstrates the CXorf41 antibody detected the CXorf41 protein (arrow).

Please note: All products are 'FOR RESEARCH USE ONLY. NOT FOR USE IN DIAGNOSTIC OR THERAPEUTIC PROCEDURES'.