

SAMD13 Antibody (C-term)

Affinity Purified Rabbit Polyclonal Antibody (Pab)

Catalog # AP20292b

Product Information

Application	WB, E
Primary Accession	Q5VXD3
Other Accession	D3YUG0
Reactivity	Human
Predicted	Mouse
Host	Rabbit
Clonality	Polyclonal
Isotype	Rabbit IgG
Clone Names	RB28869
Calculated MW	13570
Antigen Region	90-118

Additional Information

Gene ID	148418
Other Names	Sterile alpha motif domain-containing protein 13, SAM domain-containing protein 13, SAMD13
Target/Specificity	This SAMD13 antibody is generated from rabbits immunized with a KLH conjugated synthetic peptide between 90-118 amino acids from the C-terminal region of human SAMD13.
Dilution	WB~~1:1000 E~~Use at an assay dependent concentration.
Format	Purified polyclonal antibody supplied in PBS with 0.09% (W/V) sodium azide. This antibody is purified through a protein A column, followed by peptide affinity purification.
Storage	Maintain refrigerated at 2-8°C for up to 2 weeks. For long term storage store at -20°C in small aliquots to prevent freeze-thaw cycles.
Precautions	SAMD13 Antibody (C-term) is for research use only and not for use in diagnostic or therapeutic procedures.

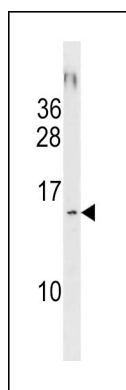
Protein Information

Name	SAMD13
------	--------

Background

The function of this protein remains unknown.

Images



SAMD13 Antibody (C-term) (Cat. #AP20292b) western blot analysis in NCI-H292 cell line lysates (35ug/lane). This demonstrates the SAMD13 antibody detected the SAMD13 protein (arrow).

Please note: All products are 'FOR RESEARCH USE ONLY. NOT FOR USE IN DIAGNOSTIC OR THERAPEUTIC PROCEDURES'.