

PLOD2 Antibody (C-term)

Affinity Purified Rabbit Polyclonal Antibody (Pab)

Catalog # AP20294b

Product Information

Application	WB, E
Primary Accession	O00469
Reactivity	Human
Host	Rabbit
Clonality	Polyclonal
Isotype	Rabbit IgG
Clone Names	RB31133
Calculated MW	84686
Antigen Region	483-512

Additional Information

Gene ID	5352
Other Names	Procollagen-lysine, 2-oxoglutarate 5-dioxygenase 2, Lysyl hydroxylase 2, LH2, PLOD2
Target/Specificity	This PLOD2 antibody is generated from rabbits immunized with a KLH conjugated synthetic peptide between 483-512 amino acids from the C-terminal region of human PLOD2.
Dilution	WB~~1:1000 E~~Use at an assay dependent concentration.
Format	Purified polyclonal antibody supplied in PBS with 0.09% (W/V) sodium azide. This antibody is purified through a protein A column, followed by peptide affinity purification.
Storage	Maintain refrigerated at 2-8°C for up to 2 weeks. For long term storage store at -20°C in small aliquots to prevent freeze-thaw cycles.
Precautions	PLOD2 Antibody (C-term) is for research use only and not for use in diagnostic or therapeutic procedures.

Protein Information

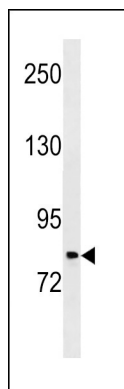
Name	PLOD2 (HGNC:9082)
Function	Forms hydroxylysine residues in -Xaa-Lys-Gly- sequences in collagens. These hydroxylysines serve as sites of attachment for carbohydrate units and are essential for the stability of the intermolecular collagen cross-links.

Cellular Location	Rough endoplasmic reticulum membrane; Peripheral membrane protein; Luminal side
Tissue Location	Highly expressed in pancreas and muscle. Isoform 1 and isoform 2 are expressed in the majority of the examined cell types Isoform 2 is specifically expressed in skin, lung, dura and aorta

Background

Forms hydroxylysine residues in -Xaa-Lys-Gly-sequences in collagens. These hydroxylysines serve as sites of attachment for carbohydrate units and are essential for the stability of the intermolecular collagen cross-links.

Images



PLOD2 Antibody (C-term) (Cat. #AP20294b) western blot analysis in Hela cell line lysates (35ug/lane). This demonstrates the PLOD2 antibody detected the PLOD2 protein (arrow).

Please note: All products are 'FOR RESEARCH USE ONLY. NOT FOR USE IN DIAGNOSTIC OR THERAPEUTIC PROCEDURES'.