

TAF1B Antibody (Center)

Affinity Purified Rabbit Polyclonal Antibody (Pab)

Catalog # AP20297c

Product Information

Application	WB, E
Primary Accession	Q53T94
Other Accession	Q4R657
Reactivity	Human
Predicted	Monkey
Host	Rabbit
Clonality	Polyclonal
Isotype	Rabbit IgG
Clone Names	RB32344
Calculated MW	68832
Antigen Region	367-396

Additional Information

Gene ID	9014
Other Names	TATA box-binding protein-associated factor RNA polymerase I subunit B, RNA polymerase I-specific TBP-associated factor 63 kDa, TAFI63, TATA box-binding protein-associated factor 1B, TBP-associated factor 1B, Transcription initiation factor SL1/TIF-IB subunit B, TAF1B
Target/Specificity	This TAF1B antibody is generated from rabbits immunized with a KLH conjugated synthetic peptide between 367-396 amino acids from the Central region of human TAF1B.
Dilution	WB~~1:1000 E~~Use at an assay dependent concentration.
Format	Purified polyclonal antibody supplied in PBS with 0.09% (W/V) sodium azide. This antibody is purified through a protein A column, followed by peptide affinity purification.
Storage	Maintain refrigerated at 2-8°C for up to 2 weeks. For long term storage store at -20°C in small aliquots to prevent freeze-thaw cycles.
Precautions	TAF1B Antibody (Center) is for research use only and not for use in diagnostic or therapeutic procedures.

Protein Information

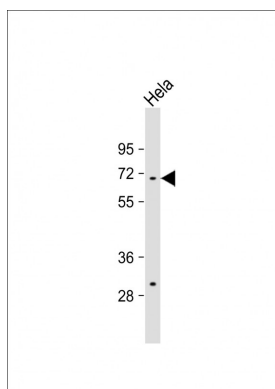
Name	TAF1B
------	-------

Function	Component of RNA polymerase I core factor complex that acts as a GTF2B/TFIIB-like factor and plays a key role in multiple steps during transcription initiation such as pre-initiation complex (PIC) assembly and postpolymerase recruitment events in polymerase I (Pol I) transcription. Binds rDNA promoters and plays a role in Pol I recruitment as a component of the SL1/TIF-IB complex and, possibly, directly through its interaction with RRN3.
Cellular Location	Nucleus, nucleolus

Background

Component of RNA polymerase I core factor complex that acts as a GTF2B/TFIIB-like factor and plays a key role in multiple steps during transcription initiation such as preinitiation complex (PIC) assembly and postpolymerase recruitment events in polymerase I (Pol I) transcription. Binds rDNA promoters and plays a role in Pol I recruitment as a component of the SL1/TIF-IB complex and, possibly, directly through its interaction with RRN3.

Images



Anti-TAF1B Antibody (Center) at 1:1000 dilution + HeLa whole cell lysate Lysates/proteins at 20 µg per lane. Secondary Goat Anti-Rabbit IgG, (H+L), Peroxidase conjugated at 1/10000 dilution. Predicted band size : 69 kDa Blocking/Dilution buffer: 5% NFDM/TBST.

Please note: All products are 'FOR RESEARCH USE ONLY. NOT FOR USE IN DIAGNOSTIC OR THERAPEUTIC PROCEDURES'.