

# SAPS2 Antibody (Center)

Affinity Purified Rabbit Polyclonal Antibody (Pab)

Catalog # AP20308c

## Product Information

---

Application	WB, E
Primary Accession	<a href="#">Q75170</a>
Other Accession	<a href="#">Q8R3Q2</a>
Reactivity	Human
Predicted	Mouse
Host	Rabbit
Clonality	Polyclonal
Isotype	Rabbit IgG
Clone Names	RB40451
Calculated MW	104942
Antigen Region	565-593

## Additional Information

---

Gene ID	9701
Other Names	Serine/threonine-protein phosphatase 6 regulatory subunit 2, SAPS domain family member 2, PPP6R2, KIAA0685, PP6R2, SAPS2
Target/Specificity	This SAPS2 antibody is generated from rabbits immunized with a KLH conjugated synthetic peptide between 565-593 amino acids from the Central region of human SAPS2.
Dilution	WB~~1:1000 E~~Use at an assay dependent concentration.
Format	Purified polyclonal antibody supplied in PBS with 0.09% (W/V) sodium azide. This antibody is purified through a protein A column, followed by peptide affinity purification.
Storage	Maintain refrigerated at 2-8°C for up to 2 weeks. For long term storage store at -20°C in small aliquots to prevent freeze-thaw cycles.
Precautions	SAPS2 Antibody (Center) is for research use only and not for use in diagnostic or therapeutic procedures.

## Protein Information

---

Name	PPP6R2
Synonyms	KIAA0685, PP6R2, SAPS2

<b>Function</b>	Regulatory subunit of protein phosphatase 6 (PP6). May function as a scaffolding PP6 subunit. Involved in the PP6-mediated dephosphorylation of NFKBIE opposing its degradation in response to TNF-alpha.
<b>Cellular Location</b>	Cytoplasm.
<b>Tissue Location</b>	Ubiquitously expressed with strongest expression in the testis followed by liver, heart, kidney, brain and placenta

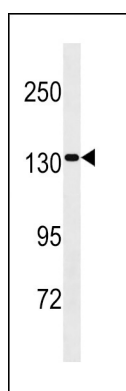
## Background

---

Regulatory subunit of protein phosphatase 6 (PP6). May function as a scaffolding PP6 subunit. Involved in the PP6-mediated dephosphorylation of NFKBIE opposing its degradation in response to TNF-alpha.

## Images

---



SAPS2 Antibody (Center) (Cat. #AP20308c) western blot analysis in HepG2 cell line lysates (35ug/lane). This demonstrates the SAPS2 antibody detected the SAPS2 protein (arrow).

Please note: All products are 'FOR RESEARCH USE ONLY. NOT FOR USE IN DIAGNOSTIC OR THERAPEUTIC PROCEDURES'.