

PLXDC2 Antibody (N-term)

Affinity Purified Rabbit Polyclonal Antibody (Pab)

Catalog # AP20309a

Product Information

Application	WB, E
Primary Accession	Q6UX71
Other Accession	Q9DC11
Reactivity	Human
Predicted	Mouse
Host	Rabbit
Clonality	Polyclonal
Isotype	Rabbit IgG
Clone Names	RB40455
Calculated MW	59583
Antigen Region	120-147

Additional Information

Gene ID	84898
Other Names	Plexin domain-containing protein 2, Tumor endothelial marker 7-related protein, PLXDC2, TEM7R
Target/Specificity	This PLXDC2 antibody is generated from rabbits immunized with a KLH conjugated synthetic peptide between 120-147 amino acids from the N-terminal region of human PLXDC2.
Dilution	WB~~1:1000 E~~Use at an assay dependent concentration.
Format	Purified polyclonal antibody supplied in PBS with 0.09% (W/V) sodium azide. This antibody is purified through a protein A column, followed by peptide affinity purification.
Storage	Maintain refrigerated at 2-8°C for up to 2 weeks. For long term storage store at -20°C in small aliquots to prevent freeze-thaw cycles.
Precautions	PLXDC2 Antibody (N-term) is for research use only and not for use in diagnostic or therapeutic procedures.

Protein Information

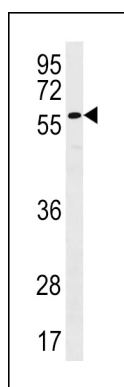
Name	PLXDC2
Synonyms	TEM7R

Function	May play a role in tumor angiogenesis.
Cellular Location	Membrane; Single-pass type I membrane protein
Tissue Location	Expressed in the endothelial cells of the stroma but not in the endothelial cells of normal colonic tissue

Background

May play a role in tumor angiogenesis.

Images



PLXDC2 Antibody (N-term) (Cat. #AP20309a) western blot analysis in NCI-H292 cell line lysates (35ug/lane). This demonstrates the PLXDC2 antibody detected the PLXDC2 protein (arrow).

Please note: All products are 'FOR RESEARCH USE ONLY. NOT FOR USE IN DIAGNOSTIC OR THERAPEUTIC PROCEDURES'.