

# RFPL3 Antibody (N-term)

Affinity Purified Rabbit Polyclonal Antibody (Pab)

Catalog # AP20312a

## Product Information

---

Application	WB, E
Primary Accession	<a href="#">Q75679</a>
Reactivity	Human
Host	Rabbit
Clonality	Polyclonal
Isotype	Rabbit IgG
Clone Names	RB40465
Calculated MW	35386
Antigen Region	70-98

## Additional Information

---

Gene ID	10738
Other Names	Ret finger protein-like 3, RFPL3
Target/Specificity	This RFPL3 antibody is generated from rabbits immunized with a KLH conjugated synthetic peptide between 70-98 amino acids from the N-terminal region of human RFPL3.
Dilution	WB~~1:1000 E~~Use at an assay dependent concentration.
Format	Purified polyclonal antibody supplied in PBS with 0.09% (W/V) sodium azide. This antibody is purified through a protein A column, followed by peptide affinity purification.
Storage	Maintain refrigerated at 2-8°C for up to 2 weeks. For long term storage store at -20°C in small aliquots to prevent freeze-thaw cycles.
Precautions	RFPL3 Antibody (N-term) is for research use only and not for use in diagnostic or therapeutic procedures.

## Protein Information

---

Name	RFPL3
Function	(Microbial infection) Stimulates the activity of Human Immunodeficiency Virus 1/HIV-1 pre-integration complex.
Cellular Location	Cytoplasm. Nucleus. Note=A higher concentration of RFPL3 is observed in the cytoplasm compared to the nucleus

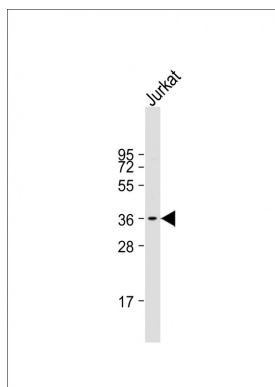
## Tissue Location

Expressed during neurogenesis in differentiating human embryonic stem cells and in the developing human neocortex

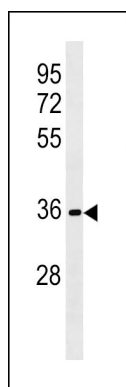
## Background

The function of this protein remains unknown. RFPL3 protein is encoded by 2 exons and is 91 to 94% identical to RFPL1 and RFPL2. Exon 1 of RFPL3 encodes a putative RING-like motif, and exon 2 encodes a B30-2 domain. Seroussi et al. (1999) proposed that RFPL3 arose from an intrachromosomal duplication.

## Images



Anti-RFPL3 Antibody (N-term) at 1:1000 dilution + Jurkat whole cell lysate Lysates/proteins at 20 µg per lane. Secondary Goat Anti-Rabbit IgG, (H+L), Peroxidase conjugated at 1/10000 dilution. Predicted band size : 35 kDa Blocking/Dilution buffer: 5% NFDM/TBST.



RFPL3 Antibody (N-term) (Cat. #AP20312a) western blot analysis in HL-60 cell line lysates (35ug/lane). This demonstrates the RFPL3 antibody detected the RFPL3 protein (arrow).

Please note: All products are 'FOR RESEARCH USE ONLY. NOT FOR USE IN DIAGNOSTIC OR THERAPEUTIC PROCEDURES'.