

# ASB11 Antibody (N-term)

Affinity Purified Rabbit Polyclonal Antibody (Pab)

Catalog # AP20314a

## Product Information

---

<b>Application</b>	WB, E
<b>Primary Accession</b>	<a href="#">Q8WXH4</a>
<b>Other Accession</b>	<a href="#">Q9CQ31</a> , <a href="#">Q3SZE4</a>
<b>Reactivity</b>	Human, Mouse
<b>Predicted</b>	Bovine, Mouse
<b>Host</b>	Rabbit
<b>Clonality</b>	Polyclonal
<b>Isotype</b>	Rabbit IgG
<b>Calculated MW</b>	35367
<b>Antigen Region</b>	26-54

## Additional Information

---

<b>Gene ID</b>	140456
<b>Other Names</b>	Ankyrin repeat and SOCS box protein 11, ASB-11, ASB11
<b>Target/Specificity</b>	This ASB11 antibody is generated from rabbits immunized with a KLH conjugated synthetic peptide between 26-54 amino acids from the N-terminal region of human ASB11.
<b>Dilution</b>	WB~~1:1000 E~~Use at an assay dependent concentration.
<b>Format</b>	Purified polyclonal antibody supplied in PBS with 0.09% (W/V) sodium azide. This antibody is purified through a protein A column, followed by peptide affinity purification.
<b>Storage</b>	Maintain refrigerated at 2-8°C for up to 2 weeks. For long term storage store at -20°C in small aliquots to prevent freeze-thaw cycles.
<b>Precautions</b>	ASB11 Antibody (N-term) is for research use only and not for use in diagnostic or therapeutic procedures.

## Protein Information

---

<b>Name</b>	ASB11 {ECO:0000303 PubMed:24337577, ECO:0000312 HGNC:HGNC:17186}
<b>Function</b>	Substrate-recognition component of a cullin-5-RING E3 ubiquitin-protein ligase complex (ECS complex, also named CRL5 complex), which mediates the ubiquitination and subsequent proteasomal degradation of target proteins,

such as BIK, DIRAS2 and RPN1 (PubMed:[24337577](#), PubMed:[31387940](#), PubMed:[38574733](#)). The ECS(ASB11) complex acts as a regulator of the endoplasmic reticulum unfolded protein response by mediating ubiquitination and degradation of BIK (PubMed:[31387940](#)).

#### Cellular Location

Endoplasmic reticulum

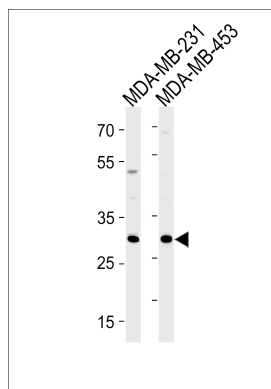
## Background

---

May be a substrate-recognition component of a SCF-like ECS (Elongin-Cullin-SOCS-box protein) E3 ubiquitin-protein ligase complex which mediates the ubiquitination and subsequent proteasomal degradation of target proteins (By similarity).

## Images

---



ASB11 Antibody (N-term) (Cat. #AP20314a) western blot analysis in MDA-MB-231,MDA-MB-453 cell line lysates (35ug/lane).This demonstrates the ASB11 antibody detected the ASB11 protein (arrow).

Please note: All products are 'FOR RESEARCH USE ONLY. NOT FOR USE IN DIAGNOSTIC OR THERAPEUTIC PROCEDURES'.