

# SLCO6A1 Antibody (C-term)

Affinity Purified Rabbit Polyclonal Antibody (Pab)

Catalog # AP20316b

## Product Information

---

<b>Application</b>	WB, E
<b>Primary Accession</b>	<a href="#">Q86UG4</a>
<b>Reactivity</b>	Human
<b>Host</b>	Rabbit
<b>Clonality</b>	Polyclonal
<b>Isotype</b>	Rabbit IgG
<b>Clone Names</b>	RB40482
<b>Calculated MW</b>	79232
<b>Antigen Region</b>	678-707

## Additional Information

---

<b>Gene ID</b>	133482
<b>Other Names</b>	Solute carrier organic anion transporter family member 6A1, Cancer/testis antigen 48, CT48, Gonad-specific transporter, GST, Organic anion-transporting polypeptide 6A1, Organic anion-transporting polypeptide I, OATP-I, Solute carrier family 21 member 19, SLCO6A1, OATP6A1, SLC21A19
<b>Target/Specificity</b>	This SLCO6A1 antibody is generated from rabbits immunized with a KLH conjugated synthetic peptide between 678-707 amino acids from the C-terminal region of human SLCO6A1.
<b>Dilution</b>	WB~~1:1000 E~~Use at an assay dependent concentration.
<b>Format</b>	Purified polyclonal antibody supplied in PBS with 0.09% (W/V) sodium azide. This antibody is purified through a protein A column, followed by peptide affinity purification.
<b>Storage</b>	Maintain refrigerated at 2-8°C for up to 2 weeks. For long term storage store at -20°C in small aliquots to prevent freeze-thaw cycles.
<b>Precautions</b>	SLCO6A1 Antibody (C-term) is for research use only and not for use in diagnostic or therapeutic procedures.

## Protein Information

---

<b>Name</b>	SLCO6A1
<b>Synonyms</b>	OATP6A1, SLC21A19

**Cellular Location**

Cell membrane; Multi-pass membrane protein.

**Tissue Location**

Strongly expressed in testis. Weakly expressed in spleen, brain, fetal brain and placenta. Detected in lung tumors

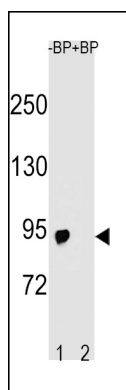
## Background

---

The function of SLCO6A1 (solute carrier organic anion transporter family, member 6A1) is currently unknown.

## Images

---



Western blot analysis of SLCO6A1 Antibody (C-term) Pab (Cat. #AP20316b) pre-incubated without (lane 1) and with (lane 2) blocking peptide in A2058 cell line lysate. SLCO6A1 Antibody (C-term) (arrow) was detected using the purified Pab.

Please note: All products are 'FOR RESEARCH USE ONLY. NOT FOR USE IN DIAGNOSTIC OR THERAPEUTIC PROCEDURES'.