

ZMAT1 Antibody (C-term)

Affinity Purified Rabbit Polyclonal Antibody (Pab)

Catalog # AP20320b

Product Information

Application	WB, E
Primary Accession	Q5H9K5
Reactivity	Human
Host	Rabbit
Clonality	Polyclonal
Isotype	Rabbit IgG
Clone Names	RB41609
Calculated MW	74783
Antigen Region	548-577

Additional Information

Gene ID	84460
Other Names	Zinc finger matrin-type protein 1, ZMAT1, KIAA1789
Target/Specificity	This ZMAT1 antibody is generated from rabbits immunized with a KLH conjugated synthetic peptide between 548-577 amino acids from the C-terminal region of human ZMAT1.
Dilution	WB~~1:1000 E~~Use at an assay dependent concentration.
Format	Purified polyclonal antibody supplied in PBS with 0.09% (W/V) sodium azide. This antibody is purified through a protein A column, followed by peptide affinity purification.
Storage	Maintain refrigerated at 2-8°C for up to 2 weeks. For long term storage store at -20°C in small aliquots to prevent freeze-thaw cycles.
Precautions	ZMAT1 Antibody (C-term) is for research use only and not for use in diagnostic or therapeutic procedures.

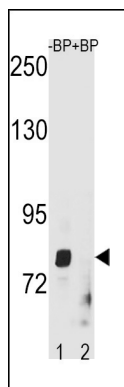
Protein Information

Name	ZMAT1
Synonyms	KIAA1789
Cellular Location	Nucleus.

Background

Contains 3 matrin-type zinc fingers.

Images



ZMAT1 Antibody (C-term) (Cat. #AP20320b) western blot analysis in HepG2 cell line lysates (35ug/lane). This demonstrates the ZMAT1 antibody detected the ZMAT1 protein (arrow).

Please note: All products are 'FOR RESEARCH USE ONLY. NOT FOR USE IN DIAGNOSTIC OR THERAPEUTIC PROCEDURES'.