

# RFTN1 Antibody (Center)

Affinity Purified Rabbit Polyclonal Antibody (Pab)

Catalog # AP20321c

## Product Information

---

Application	WB, E
Primary Accession	<a href="#">Q14699</a>
Reactivity	Human
Host	Rabbit
Clonality	Polyclonal
Isotype	Rabbit IgG
Calculated MW	63146
Antigen Region	169-198

## Additional Information

---

Gene ID	23180
Other Names	Raftlin, Cell migration-inducing gene 2 protein, Raft-linking protein, RFTN1, KIAA0084
Target/Specificity	This RFTN1 antibody is generated from rabbits immunized with a KLH conjugated synthetic peptide between 169-198 amino acids from the Central region of human RFTN1.
Dilution	WB~~1:1000 E~~Use at an assay dependent concentration.
Format	Purified polyclonal antibody supplied in PBS with 0.09% (W/V) sodium azide. This antibody is purified through a protein A column, followed by peptide affinity purification.
Storage	Maintain refrigerated at 2-8°C for up to 2 weeks. For long term storage store at -20°C in small aliquots to prevent freeze-thaw cycles.
Precautions	RFTN1 Antibody (Center) is for research use only and not for use in diagnostic or therapeutic procedures.

## Protein Information

---

Name	RFTN1
Synonyms	KIAA0084
Function	Involved in protein trafficking via association with clathrin and AP2 complex (PubMed: <a href="#">21266579</a> , PubMed: <a href="#">27022195</a> ). Upon bacterial lipopolysaccharide stimulation, mediates internalization of TLR4 to endosomes in dendritic cells

and macrophages; and internalization of poly(I:C) to TLR3-positive endosomes in myeloid dendritic cells and epithelial cells; resulting in activation of TICAM1-mediated signaling and subsequent IFNB1 production (PubMed:[21266579](#), PubMed:[27022195](#)). Involved in T-cell antigen receptor-mediated signaling by regulating tyrosine kinase LCK localization, T-cell dependent antibody production and cytokine secretion (By similarity). May regulate B-cell antigen receptor-mediated signaling (PubMed:[12805216](#)). May play a pivotal role in the formation and/or maintenance of lipid rafts (PubMed:[12805216](#)).

#### Cellular Location

Cell membrane; Lipid-anchor. Cytoplasm. Membrane raft. Endosome. Early endosome. Note=Translocates from cytoplasm to cell membrane where it colocalizes with poly (I:C) and then moves to endosomes where it colocalizes with TLR3 (PubMed:21266579) Translocates from cytoplasm to cell membrane where it colocalizes with TLR4 and then together with TLR4 moves to endosomes, upon lipopolysaccharide stimulation (PubMed:27022195)

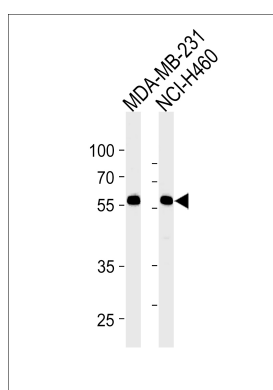
#### Tissue Location

Expressed in B-cells (at protein level) (PubMed:12805216). Expressed in dendritic cells and macrophages (PubMed:21266579, PubMed:27022195).

## Background

May play a pivotal role in the formation and/or maintenance of lipid rafts. May regulate B-cell antigen receptor-mediated signaling.

## Images



RFTN1 Antibody (Center) (Cat. #AP20321c) western blot analysis in MDA-MB-231, NCI-H460 cell line lysates (35ug/lane). This demonstrates the RFTN1 antibody detected the RFTN1 protein (arrow).

Please note: All products are 'FOR RESEARCH USE ONLY. NOT FOR USE IN DIAGNOSTIC OR THERAPEUTIC PROCEDURES'.