

FAM26F Antibody (C-term)

Affinity Purified Rabbit Polyclonal Antibody (Pab)

Catalog # AP20331b

Product Information

Application	WB, E
Primary Accession	Q5R3K3
Reactivity	Human
Host	Rabbit
Clonality	Polyclonal
Isotype	Rabbit IgG
Clone Names	RB42320
Calculated MW	34458
Antigen Region	266-295

Additional Information

Gene ID	441168
Other Names	Protein FAM26F, FAM26F, C6orf187
Target/Specificity	This FAM26F antibody is generated from rabbits immunized with a KLH conjugated synthetic peptide between 266-295 amino acids from the C-terminal region of human FAM26F.
Dilution	WB~~1:1000 E~~Use at an assay dependent concentration.
Format	Purified polyclonal antibody supplied in PBS with 0.09% (W/V) sodium azide. This antibody is purified through a protein A column, followed by peptide affinity purification.
Storage	Maintain refrigerated at 2-8°C for up to 2 weeks. For long term storage store at -20°C in small aliquots to prevent freeze-thaw cycles.
Precautions	FAM26F Antibody (C-term) is for research use only and not for use in diagnostic or therapeutic procedures.

Protein Information

Name	CALHM6 (HGNC:33391)
Synonyms	C6orf187, FAM26F
Function	Pore-forming subunit of an ATP-permeable channel (By similarity). In response to pathogen-derived and proinflammatory stimuli, relocates from intracellular compartments to NK-dendritic cell and NK-macrophage immune

synapses where it mediates ATP efflux and NK cell activation involved in antimicrobial and antitumor responses (By similarity). May assemble to form gap junction channel-like structures with gating and ion conductance likely regulated by membrane lipids and voltage rather than by extracellular calcium levels (PubMed:[32374262](#)).

Cellular Location

Cell membrane; Multi-pass membrane protein. Note=Recruited at immune synapses in response to pathogen-derived and proinflammatory stimuli {ECO:0000250|UniProtKB:Q8C9E8}

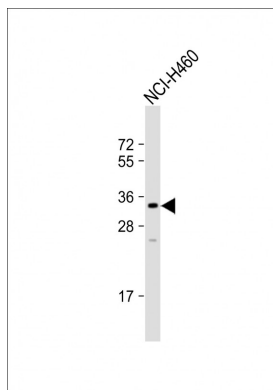
Tissue Location

Placenta..

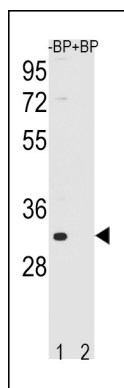
Background

Belongs to the FAM26 family.

Images



Anti-FAM26F Antibody (C-term) at 1:1000 dilution + NCI-H460 whole cell lysate Lysates/proteins at 20 µg per lane. Secondary Goat Anti-Rabbit IgG, (H+L), Peroxidase conjugated at 1/10000 dilution. Predicted band size : 34 kDa Blocking/Dilution buffer: 5% NFDM/TBST.



Western blot analysis of FAM26F Antibody (C-term) Pab (Cat. #AP20331b) pre-incubated without(lane 1) and with(lane 2) blocking peptide in NCI-H460 cell line lysate. FAM26F Antibody (C-term) (arrow) was detected using the purified Pab.

Please note: All products are 'FOR RESEARCH USE ONLY. NOT FOR USE IN DIAGNOSTIC OR THERAPEUTIC PROCEDURES'.