

HLA-DOA Antibody (N-term)

Affinity Purified Rabbit Polyclonal Antibody (Pab)

Catalog # AP20332a

Product Information

Application	WB, E
Primary Accession	P06340
Reactivity	Human
Host	Rabbit
Clonality	Polyclonal
Isotype	Rabbit IgG
Clone Names	RB42412
Calculated MW	27599
Antigen Region	31-59

Additional Information

Gene ID	3111
Other Names	HLA class II histocompatibility antigen, DO alpha chain, MHC DN-alpha, MHC DZ alpha, MHC class II antigen DOA, HLA-DOA, HLA-DNA, HLA-DZA
Target/Specificity	This HLA-DOA antibody is generated from rabbits immunized with a KLH conjugated synthetic peptide between 31-59 amino acids from the N-terminal region of human HLA-DOA.
Dilution	WB~~1:1000 E~~Use at an assay dependent concentration.
Format	Purified polyclonal antibody supplied in PBS with 0.09% (W/V) sodium azide. This antibody is purified through a protein A column, followed by peptide affinity purification.
Storage	Maintain refrigerated at 2-8°C for up to 2 weeks. For long term storage store at -20°C in small aliquots to prevent freeze-thaw cycles.
Precautions	HLA-DOA Antibody (N-term) is for research use only and not for use in diagnostic or therapeutic procedures.

Protein Information

Name	HLA-DOA
Synonyms	HLA-DNA, HLA-DZA
Function	Important modulator in the HLA class II restricted antigen presentation pathway by interaction with the HLA-DM molecule in B- cells. Modifies

peptide exchange activity of HLA-DM.

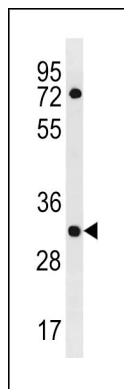
Cellular Location

Endosome membrane; Single-pass type I membrane protein. Lysosome membrane; Single-pass type I membrane protein Note=Complexes with HLA-DM molecule during intracellular transport and in endosomal/lysosomal compartments. Heterotetramerization is necessary to exit the ER

Background

Important modulator in the HLA class II restricted antigen presentation pathway by interaction with the HLA-DM molecule in B-cells. Modifies peptide exchange activity of HLA-DM.

Images



HLA-DOA Antibody (N-term) (Cat. #AP20332a) western blot analysis in HL-60 cell line lysates (35ug/lane). This demonstrates the HLA-DOA antibody detected the HLA-DOA protein (arrow).

Please note: All products are 'FOR RESEARCH USE ONLY. NOT FOR USE IN DIAGNOSTIC OR THERAPEUTIC PROCEDURES'.