

NALD2 Antibody (C-term)

Affinity Purified Rabbit Polyclonal Antibody (Pab)

Catalog # AP20342b

Product Information

Application	WB, E
Primary Accession	Q9Y3Q0
Other Accession	Q9CZR2
Reactivity	Human, Rat, Mouse
Predicted	Mouse
Host	Rabbit
Clonality	Polyclonal
Isotype	Rabbit IgG
Clone Names	RB42711
Calculated MW	83592
Antigen Region	507-535

Additional Information

Gene ID	10003
Other Names	N-acetylated-alpha-linked acidic dipeptidase 2, Glutamate carboxypeptidase III, GCPIII, N-acetylated-alpha-linked acidic dipeptidase II, NAALADase II, NAALAD2
Target/Specificity	This NALD2 antibody is generated from rabbits immunized with a KLH conjugated synthetic peptide between 507-535 amino acids from the C-terminal region of human NALD2.
Dilution	WB~~1:1000 E~~Use at an assay dependent concentration.
Format	Purified polyclonal antibody supplied in PBS with 0.05% (V/V) Proclin 300. This antibody is prepared by Saturated Ammonium Sulfate (SAS) precipitation followed by dialysis against PBS.
Storage	Maintain refrigerated at 2-8°C for up to 2 weeks. For long term storage store at -20°C in small aliquots to prevent freeze-thaw cycles.
Precautions	NALD2 Antibody (C-term) is for research use only and not for use in diagnostic or therapeutic procedures.

Protein Information

Name	NAALAD2
Function	Has N-acetylated-alpha-linked-acidic dipeptidase (NAALADase) activity. Also

exhibits a dipeptidyl-peptidase IV type activity. Inactivates the peptide neurotransmitter N-acetylaspartylglutamate.

Cellular Location

Cell membrane {ECO:0000250 | UniProtKB:Q04609}; Single-pass type II membrane protein {ECO:0000250 | UniProtKB:Q04609}

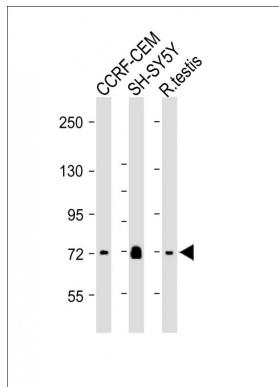
Tissue Location

Highest expression in the testis. Also found in ovary and spleen. Weak expression in prostate, heart and placenta. In brain, expressed in striatum, parietal cortex and ventral striatum with lower levels in hippocampus, brain stem, putamen and superior colliculus

Background

Has N-acetylated-alpha-linked-acidic dipeptidase (NAALADase) activity. Also exhibits a dipeptidyl-peptidase IV type activity. Inactivate the peptide neurotransmitter N-acetylaspartylglutamate.

Images



All lanes : Anti-NALD2 Antibody (C-term) at 1:500 dilution
Lane 1: CCRF-CEM whole cell lysate Lane 2: SH-SY5Y whole cell lysate Lane 3: Rat testis tissue lysate
Lysates/proteins at 20 µg per lane. Secondary Goat Anti-Rabbit IgG, (H+L), Peroxidase conjugated (ASP1615) at 1/15000 dilution. Observed band size : 72kDa
Blocking/Dilution buffer: 5% NFDM/TBST.

Please note: All products are 'FOR RESEARCH USE ONLY. NOT FOR USE IN DIAGNOSTIC OR THERAPEUTIC PROCEDURES'.