

RUNDC2A Antibody (C-term)

Affinity Purified Rabbit Polyclonal Antibody (Pab)

Catalog # AP20343b

Product Information

Application	WB, E
Primary Accession	Q8TEQ0
Reactivity	Human
Host	Rabbit
Clonality	Polyclonal
Isotype	Rabbit IgG
Clone Names	RB42715
Calculated MW	91254
Antigen Region	259-287

Additional Information

Gene ID	92017
Other Names	Sorting nexin-29, RUN domain-containing protein 2A, SNX29, RUNDC2A
Target/Specificity	This RUNDC2A antibody is generated from rabbits immunized with a KLH conjugated synthetic peptide between 259-287 amino acids from the C-terminal region of human RUNDC2A.
Dilution	WB~~1:1000 E~~Use at an assay dependent concentration.
Format	Purified polyclonal antibody supplied in PBS with 0.09% (W/V) sodium azide. This antibody is purified through a protein A column, followed by peptide affinity purification.
Storage	Maintain refrigerated at 2-8°C for up to 2 weeks. For long term storage store at -20°C in small aliquots to prevent freeze-thaw cycles.
Precautions	RUNDC2A Antibody (C-term) is for research use only and not for use in diagnostic or therapeutic procedures.

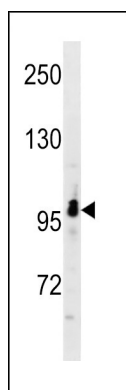
Protein Information

Name	SNX29
Synonyms	RUNDC2A

Background

The function of this protein remains unknown.

Images



RUNDC2A Antibody (C-term) (Cat. #AP20343b) western blot analysis in A549 cell line lysates (35ug/lane). This demonstrates the RUNDC2A antibody detected the RUNDC2A protein (arrow).

Please note: All products are 'FOR RESEARCH USE ONLY. NOT FOR USE IN DIAGNOSTIC OR THERAPEUTIC PROCEDURES'.