

SGSM1 Antibody (Center)

Affinity Purified Rabbit Polyclonal Antibody (Pab)

Catalog # AP20344c

Product Information

Application	WB, E
Primary Accession	Q2NKG1
Reactivity	Human
Host	Rabbit
Clonality	Polyclonal
Isotype	Rabbit IgG
Clone Names	RB42725
Calculated MW	129718
Antigen Region	624-652

Additional Information

Gene ID	129049
Other Names	Small G protein signaling modulator 1, RUN and TBC1 domain-containing protein 2, SGSM1, KIAA1941, RUTBC2
Target/Specificity	This SGSM1 antibody is generated from rabbits immunized with a KLH conjugated synthetic peptide between 624-652 amino acids from the Central region of human SGSM1.
Dilution	WB~~1:1000 E~~Use at an assay dependent concentration.
Format	Purified polyclonal antibody supplied in PBS with 0.09% (W/V) sodium azide. This antibody is purified through a protein A column, followed by peptide affinity purification.
Storage	Maintain refrigerated at 2-8°C for up to 2 weeks. For long term storage store at -20°C in small aliquots to prevent freeze-thaw cycles.
Precautions	SGSM1 Antibody (Center) is for research use only and not for use in diagnostic or therapeutic procedures.

Protein Information

Name	SGSM1
Synonyms	KIAA1941, RUTBC2
Function	Interacts with numerous Rab family members, functioning as Rab effector for some, and as GTPase activator for others. Promotes GTP hydrolysis by

RAB34 and RAB36. Probably functions as a GTPase effector with RAB9A and RAB9B; does not stimulate GTP hydrolysis with RAB9A and RAB9B.

Cellular Location

Golgi apparatus, trans-Golgi network {ECO:0000250|UniProtKB:Q8BPQ7}. Cytoplasmic vesicle membrane; Peripheral membrane protein. Cytoplasm
Note=Recruited to cytoplasmic vesicle membranes via its interaction with Rab family members, such as RAB9A.

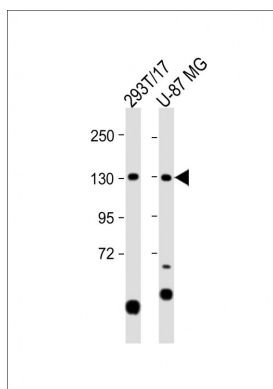
Tissue Location

Mainly expressed in brain, heart and testis.

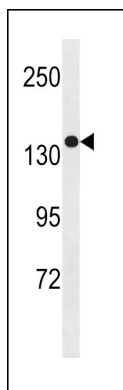
Background

The function of this protein remains unknown.

Images



All lanes : Anti-SGSM1 Antibody (Center) at 1:1000 dilution Lane 1: 293T/17 whole cell lysate Lane 2: U-87 MG whole cell lysate Lysates/proteins at 20 µg per lane. Secondary Goat Anti-Rabbit IgG, (H+L), Peroxidase conjugated at 1/10000 dilution. Predicted band size : 130 kDa Blocking/Dilution buffer: 5% NFDM/TBST.



SGSM1 Antibody (Center) (Cat. #AP20344c) western blot analysis in MDA-MB453 cell line lysates (35µg/lane). This demonstrates the SGSM1 antibody detected the SGSM1 protein (arrow).

Please note: All products are 'FOR RESEARCH USE ONLY. NOT FOR USE IN DIAGNOSTIC OR THERAPEUTIC PROCEDURES'.