

STK25 Antibody (C-term)

Affinity Purified Rabbit Polyclonal Antibody (Pab)

Catalog # AP20345b

Product Information

Application	WB, E
Primary Accession	O00506
Other Accession	Q9Z2W1 , Q3SWY6
Reactivity	Human
Predicted	Bovine, Mouse
Host	Rabbit
Clonality	Polyclonal
Isotype	Rabbit IgG
Clone Names	RB42740
Calculated MW	48112
Antigen Region	347-375

Additional Information

Gene ID	10494
Other Names	Serine/threonine-protein kinase 25, Ste20-like kinase, Sterile 20/oxidant stress-response kinase 1, SOK-1, Ste20/oxidant stress response kinase 1, STK25, SOK1, YSK1
Target/Specificity	This STK25 antibody is generated from rabbits immunized with a KLH conjugated synthetic peptide between 347-375 amino acids from the C-terminal region of human STK25.
Dilution	WB~~1:1000 E~~Use at an assay dependent concentration.
Format	Purified polyclonal antibody supplied in PBS with 0.09% (W/V) sodium azide. This antibody is purified through a protein A column, followed by peptide affinity purification.
Storage	Maintain refrigerated at 2-8°C for up to 2 weeks. For long term storage store at -20°C in small aliquots to prevent freeze-thaw cycles.
Precautions	STK25 Antibody (C-term) is for research use only and not for use in diagnostic or therapeutic procedures.

Protein Information

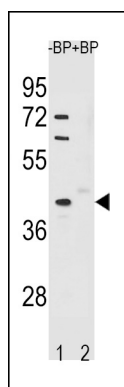
Name	STK25 (HGNC:11404)
Synonyms	SOK1, YSK1

Function	Oxidant stress-activated serine/threonine kinase that may play a role in the response to environmental stress. Targets to the Golgi apparatus where it appears to regulate protein transport events, cell adhesion, and polarity complexes important for cell migration. Part of the striatin-interacting phosphatase and kinase (STRIPAK) complexes. STRIPAK complexes have critical roles in protein (de)phosphorylation and are regulators of multiple signaling pathways including Hippo, MAPK, nuclear receptor and cytoskeleton remodeling. Different types of STRIPAK complexes are involved in a variety of biological processes such as cell growth, differentiation, apoptosis, metabolism and immune regulation (PubMed: 18782753).
Cellular Location	Cytoplasm. Golgi apparatus. Note=Localizes to the Golgi apparatus
Tissue Location	Ubiquitously expressed. Highest levels are found in testis, large intestine, brain and stomach followed by heart and lung

Background

Oxidant stress-activated serine/threonine kinase that may play a role in the response to environmental stress. Targets to the Golgi apparatus where it appears to regulate protein transport events, cell adhesion, and polarity complexes important for cell migration.

Images



Western blot analysis of STK25 Antibody (C-term) Pab (Cat. #AP20345b) pre-incubated without(lane 1) and with(lane 2) blocking peptide in A549 cell line lysate. STK25 Antibody (C-term) (arrow) was detected using the purified Pab.

Please note: All products are 'FOR RESEARCH USE ONLY. NOT FOR USE IN DIAGNOSTIC OR THERAPEUTIC PROCEDURES'.