

SUZ12 Antibody (C-term)

Affinity Purified Rabbit Polyclonal Antibody (Pab)

Catalog # AP20347b

Product Information

Application	WB, E
Primary Accession	Q15022
Other Accession	Q80U70
Reactivity	Human, Mouse
Predicted	Mouse
Host	Rabbit
Clonality	Polyclonal
Isotype	Rabbit IgG
Clone Names	RB42757
Calculated MW	83055
Antigen Region	559-588

Additional Information

Gene ID	23512
Other Names	Polycomb protein SUZ12, Chromatin precipitated E2F target 9 protein, ChET 9 protein, Joined to JAZF1 protein, Suppressor of zeste 12 protein homolog, SUZ12, CHET9, JJAZ1, KIAA0160
Target/Specificity	This SUZ12 antibody is generated from rabbits immunized with a KLH conjugated synthetic peptide between 559-588 amino acids from the C-terminal region of human SUZ12.
Dilution	WB~~1:1000 E~~Use at an assay dependent concentration.
Format	Purified polyclonal antibody supplied in PBS with 0.09% (W/V) sodium azide. This antibody is purified through a protein A column, followed by peptide affinity purification.
Storage	Maintain refrigerated at 2-8°C for up to 2 weeks. For long term storage store at -20°C in small aliquots to prevent freeze-thaw cycles.
Precautions	SUZ12 Antibody (C-term) is for research use only and not for use in diagnostic or therapeutic procedures.

Protein Information

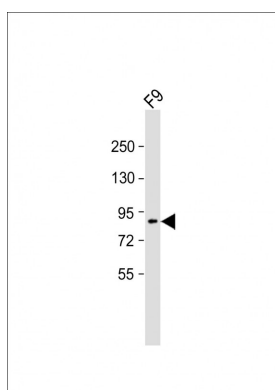
Name	SUZ12
Synonyms	CHET9, JJAZ1, KIAA0160

Function	Polycomb group (PcG) protein. Component of the PRC2 complex, which methylates 'Lys-9' (H3K9me) and 'Lys-27' (H3K27me) of histone H3, leading to transcriptional repression of the affected target gene (PubMed: 15225548 , PubMed: 15231737 , PubMed: 15385962 , PubMed: 16618801 , PubMed: 17344414 , PubMed: 18285464 , PubMed: 28229514 , PubMed: 29499137 , PubMed: 31959557). The PRC2 complex may also serve as a recruiting platform for DNA methyltransferases, thereby linking two epigenetic repression systems (PubMed: 12351676 , PubMed: 12435631 , PubMed: 15099518 , PubMed: 15225548 , PubMed: 15385962 , PubMed: 15684044 , PubMed: 16431907 , PubMed: 18086877 , PubMed: 18285464). Genes repressed by the PRC2 complex include HOXC8, HOXA9, MYT1 and CDKN2A (PubMed: 15231737 , PubMed: 16618801 , PubMed: 17200670 , PubMed: 31959557).
Cellular Location	Nucleus Note=Localizes to chromatin as part of the PRC2 complex
Tissue Location	Overexpressed in breast and colon cancer.

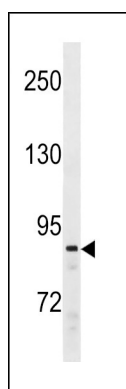
Background

Polycomb group (PcG) protein. Component of the PRC2/EED-EZH2 complex, which methylates 'Lys-9' (H3K9me) and 'Lys-27' (H3K27me) of histone H3, leading to transcriptional repression of the affected target gene. The PRC2/EED-EZH2 complex may also serve as a recruiting platform for DNA methyltransferases, thereby linking two epigenetic repression systems. Genes repressed by the PRC2/EED-EZH2 complex include HOXC8, HOXA9, MYT1 and CDKN2A.

Images



Anti-SUZ12 Antibody (C-term) at 1:2000 dilution + F9 whole cell lysates Lysates/proteins at 20 µg per lane. Secondary Goat Anti-Rabbit IgG, (H+L), Peroxidase conjugated at 1/10000 dilution. Predicted band size : 83 kDa Blocking/Dilution buffer: 5% NFDM/TBST.



SUZ12 Antibody (C-term) (Cat. #AP20347b) western blot analysis in Ramos cell line lysates (35ug/lane). This demonstrates the SUZ12 antibody detected the SUZ12 protein (arrow).

Please note: All products are 'FOR RESEARCH USE ONLY. NOT FOR USE IN DIAGNOSTIC OR THERAPEUTIC PROCEDURES'.