

PHKA2 Antibody (N-term)

Affinity Purified Rabbit Polyclonal Antibody (Pab)

Catalog # AP20348a

Product Information

Application	WB, E
Primary Accession	P46019
Other Accession	P46018
Reactivity	Human
Predicted	Rabbit
Host	Rabbit
Clonality	Polyclonal
Isotype	Rabbit IgG
Clone Names	RB42758
Calculated MW	138408
Antigen Region	285-314

Additional Information

Gene ID	5256
Other Names	Phosphorylase b kinase regulatory subunit alpha, liver isoform, Phosphorylase kinase alpha L subunit, PHKA2, PHKLA, PYK
Target/Specificity	This PHKA2 antibody is generated from rabbits immunized with a KLH conjugated synthetic peptide between 285-314 amino acids from the N-terminal region of human PHKA2.
Dilution	WB~~1:1000 E~~Use at an assay dependent concentration.
Format	Purified polyclonal antibody supplied in PBS with 0.09% (W/V) sodium azide. This antibody is purified through a protein A column, followed by peptide affinity purification.
Storage	Maintain refrigerated at 2-8°C for up to 2 weeks. For long term storage store at -20°C in small aliquots to prevent freeze-thaw cycles.
Precautions	PHKA2 Antibody (N-term) is for research use only and not for use in diagnostic or therapeutic procedures.

Protein Information

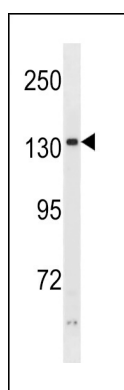
Name	PHKA2
Synonyms	PHKLA, PYK

Function	Phosphorylase b kinase catalyzes the phosphorylation of serine in certain substrates, including troponin I. The alpha chain may bind calmodulin.
Cellular Location	Cell membrane; Lipid-anchor; Cytoplasmic side
Tissue Location	Predominantly expressed in liver and other non- muscle tissues

Background

Phosphorylase b kinase catalyzes the phosphorylation of serine in certain substrates, including troponin I. The alpha chain may bind calmodulin.

Images



PHKA2 Antibody (N-term) (Cat. #AP20348a) western blot analysis in ZR-75-1 cell line lysates (35ug/lane). This demonstrates the PHKA2 antibody detected the PHKA2 protein (arrow).

Please note: All products are 'FOR RESEARCH USE ONLY. NOT FOR USE IN DIAGNOSTIC OR THERAPEUTIC PROCEDURES'.