

# NELL1 Antibody (N-term)

Affinity Purified Rabbit Polyclonal Antibody (Pab)

Catalog # AP20350a

## Product Information

---

<b>Application</b>	WB, E
<b>Primary Accession</b>	<a href="#">Q92832</a>
<b>Reactivity</b>	Human
<b>Host</b>	Rabbit
<b>Clonality</b>	Polyclonal
<b>Isotype</b>	Rabbit IgG
<b>Clone Names</b>	RB42770
<b>Calculated MW</b>	89635
<b>Antigen Region</b>	115-143

## Additional Information

---

<b>Gene ID</b>	4745
<b>Other Names</b>	Protein kinase C-binding protein NELL1, NEL-like protein 1, Nel-related protein 1, NELL1, NRP1
<b>Target/Specificity</b>	This NELL1 antibody is generated from rabbits immunized with a KLH conjugated synthetic peptide between 115-143 amino acids from the N-terminal region of human NELL1.
<b>Dilution</b>	WB~~1:1000 E~~Use at an assay dependent concentration.
<b>Format</b>	Purified polyclonal antibody supplied in PBS with 0.09% (W/V) sodium azide. This antibody is purified through a protein A column, followed by peptide affinity purification.
<b>Storage</b>	Maintain refrigerated at 2-8°C for up to 2 weeks. For long term storage store at -20°C in small aliquots to prevent freeze-thaw cycles.
<b>Precautions</b>	NELL1 Antibody (N-term) is for research use only and not for use in diagnostic or therapeutic procedures.

## Protein Information

---

<b>Name</b>	NELL1
<b>Synonyms</b>	NRP1
<b>Function</b>	Plays a role in the control of cell growth and differentiation. Promotes osteoblast cell differentiation and terminal mineralization.

## Cellular Location

Cytoplasm. Nucleus envelope. Secreted {ECO:0000250|UniProtKB:Q62919}.  
Note=Colocalizes with ATRAID on the nuclear envelope and the perinuclear region

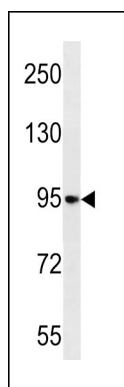
## Background

---

Involved in the control of cell growth and differentiation (By similarity).

## Images

---



NELL1 Antibody (N-term) (Cat. #AP20350a) western blot analysis in HL-60 cell line lysates (35ug/lane). This demonstrates the NELL1 antibody detected the NELL1 protein (arrow).

Please note: All products are 'FOR RESEARCH USE ONLY. NOT FOR USE IN DIAGNOSTIC OR THERAPEUTIC PROCEDURES'.