

ZBTB8A Antibody (Center)

Affinity Purified Rabbit Polyclonal Antibody (Pab)

Catalog # AP20355c

Product Information

Application	WB, E
Primary Accession	Q96BR9
Reactivity	Human
Host	Rabbit
Clonality	Polyclonal
Isotype	Rabbit IgG
Clone Names	RB42812
Calculated MW	50155
Antigen Region	205-232

Additional Information

Gene ID	653121
Other Names	Zinc finger and BTB domain-containing protein 8A, BTB/POZ and zinc-finger domain-containing factor, BTB/POZ and zinc-finger domains factor on chromosome 1, BOZ-F1, ZBTB8A, BOZF1
Target/Specificity	This ZBTB8A antibody is generated from rabbits immunized with a KLH conjugated synthetic peptide between 205-232 amino acids from the Central region of human ZBTB8A.
Dilution	WB~~1:1000 E~~Use at an assay dependent concentration.
Format	Purified polyclonal antibody supplied in PBS with 0.09% (W/V) sodium azide. This antibody is purified through a protein A column, followed by peptide affinity purification.
Storage	Maintain refrigerated at 2-8°C for up to 2 weeks. For long term storage store at -20°C in small aliquots to prevent freeze-thaw cycles.
Precautions	ZBTB8A Antibody (Center) is for research use only and not for use in diagnostic or therapeutic procedures.

Protein Information

Name	ZBTB8A
Synonyms	BOZF1
Function	May be involved in transcriptional regulation.

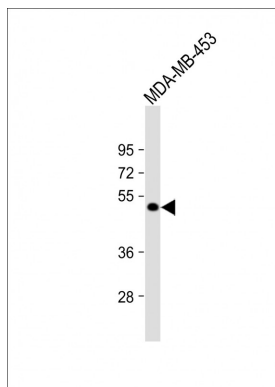
Cellular Location

Nucleus.

Background

May be involved in transcriptional regulation.

Images



Anti-ZBTB8A Antibody (Center) at 1:1000 dilution + MDA-MB-453 whole cell lysate Lysates/proteins at 20 µg per lane. Secondary Goat Anti-Rabbit IgG, (H+L), Peroxidase conjugated at 1/10000 dilution. Predicted band size : 50 kDa Blocking/Dilution buffer: 5% NFDM/TBST.

Please note: All products are 'FOR RESEARCH USE ONLY. NOT FOR USE IN DIAGNOSTIC OR THERAPEUTIC PROCEDURES'.