

# SLC7A4 Antibody (C-term)

Affinity Purified Rabbit Polyclonal Antibody (Pab)

Catalog # AP20361b

## Product Information

---

<b>Application</b>	WB, E
<b>Primary Accession</b>	<a href="#">O43246</a>
<b>Reactivity</b>	Human
<b>Host</b>	Rabbit
<b>Clonality</b>	Polyclonal
<b>Isotype</b>	Rabbit IgG
<b>Clone Names</b>	RB42820
<b>Calculated MW</b>	68268
<b>Antigen Region</b>	608-635

## Additional Information

---

<b>Gene ID</b>	6545
<b>Other Names</b>	Cationic amino acid transporter 4, CAT-4, CAT4, Solute carrier family 7 member 4, SLC7A4
<b>Target/Specificity</b>	This SLC7A4 antibody is generated from rabbits immunized with a KLH conjugated synthetic peptide between 608-635 amino acids from the C-terminal region of human SLC7A4.
<b>Dilution</b>	WB~~1:1000 E~~Use at an assay dependent concentration.
<b>Format</b>	Purified polyclonal antibody supplied in PBS with 0.09% (W/V) sodium azide. This antibody is purified through a protein A column, followed by peptide affinity purification.
<b>Storage</b>	Maintain refrigerated at 2-8°C for up to 2 weeks. For long term storage store at -20°C in small aliquots to prevent freeze-thaw cycles.
<b>Precautions</b>	SLC7A4 Antibody (C-term) is for research use only and not for use in diagnostic or therapeutic procedures.

## Protein Information

---

<b>Name</b>	SLC7A4
<b>Function</b>	Involved in the transport of the cationic amino acids (arginine, lysine and ornithine).
<b>Cellular Location</b>	Membrane; Multi-pass membrane protein

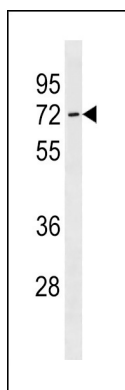
## Background

---

Involved in the transport of the cationic amino acids (arginine, lysine and ornithine).

## Images

---



SLC7A4 Antibody (C-term) (Cat. #AP20361b) western blot analysis in human placenta tissue lysates (35ug/lane). This demonstrates the SLC7A4 antibody detected the SLC7A4 protein (arrow).

Please note: All products are 'FOR RESEARCH USE ONLY. NOT FOR USE IN DIAGNOSTIC OR THERAPEUTIC PROCEDURES'.