

## ZC3H11A Antibody (N-term)

Affinity Purified Rabbit Polyclonal Antibody (Pab)

Catalog # AP20363a

### Product Information

---

<b>Application</b>	WB, E
<b>Primary Accession</b>	<a href="#">Q75152</a>
<b>Other Accession</b>	<a href="#">Q6NZE1</a> , <a href="#">Q5ZJJ1</a>
<b>Reactivity</b>	Human, Mouse
<b>Predicted</b>	Chicken
<b>Host</b>	Rabbit
<b>Clonality</b>	Polyclonal
<b>Isotype</b>	Rabbit IgG
<b>Clone Names</b>	RB42832
<b>Calculated MW</b>	89131
<b>Antigen Region</b>	38-65

### Additional Information

---

<b>Gene ID</b>	9877
<b>Other Names</b>	Zinc finger CCCH domain-containing protein 11A, ZC3H11A, KIAA0663, ZC3HDC11A
<b>Target/Specificity</b>	This ZC3H11A antibody is generated from rabbits immunized with a KLH conjugated synthetic peptide between 38-65 amino acids from the N-terminal region of human ZC3H11A.
<b>Dilution</b>	WB~~1:1000 E~~Use at an assay dependent concentration.
<b>Format</b>	Purified polyclonal antibody supplied in PBS with 0.09% (W/V) sodium azide. This antibody is purified through a protein A column, followed by peptide affinity purification.
<b>Storage</b>	Maintain refrigerated at 2-8°C for up to 2 weeks. For long term storage store at -20°C in small aliquots to prevent freeze-thaw cycles.
<b>Precautions</b>	ZC3H11A Antibody (N-term) is for research use only and not for use in diagnostic or therapeutic procedures.

### Protein Information

---

<b>Name</b>	ZC3H11A
<b>Synonyms</b>	KIAA0663, ZC3HDC11A

## Function

Through its association with TREX complex components, may participate in the export and post-transcriptional coordination of selected mRNA transcripts, including those required to maintain the metabolic processes in embryonic cells (PubMed:[22928037](#), PubMed:[37356722](#)). Binds RNA (PubMed:[29610341](#), PubMed:[37356722](#)).

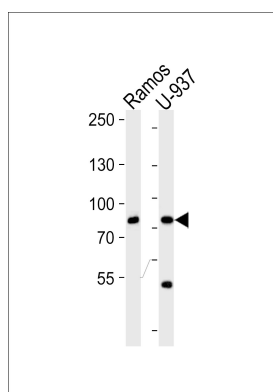
## Cellular Location

Nucleus. Nucleus speckle. Note=Retained in nuclear speckles though interaction with PABPN1.

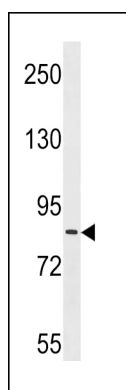
## Background

ZC3H11A, also known as zinc finger CCCH type containing 11A, contains 3 C3H1-type zinc fingers.

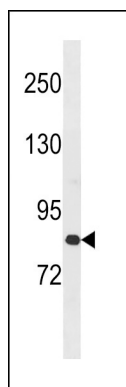
## Images



Western blot analysis of lysates from Ramos, U-937 cell line (from left to right), using ZC3H11A Antibody (N-term) (Cat. #AP20363a). AP20363a was diluted at 1:1000 at each lane. A goat anti-rabbit IgG H&L(HRP) at 1:5000 dilution was used as the secondary antibody. Lysates at 35ug per lane.



ZC3H11A Antibody (N-term) (Cat. #AP20363a) western blot analysis in Ramos cell line lysates (35ug/lane). This demonstrates the ZC3H11A antibody detected the ZC3H11A protein (arrow).



ZC3H11A Antibody (N-term) (Cat. #AP20363a) western blot analysis in mouse spleen tissue lysates (35ug/lane). This demonstrates the ZC3H11A antibody detected the ZC3H11A protein (arrow).

Please note: All products are 'FOR RESEARCH USE ONLY. NOT FOR USE IN DIAGNOSTIC OR THERAPEUTIC PROCEDURES'.