

FBXO43 Antibody (C-term)

Affinity Purified Rabbit Polyclonal Antibody (Pab)

Catalog # AP20371b

Product Information

Application	WB, E
Primary Accession	Q4G163
Reactivity	Human
Host	Rabbit
Clonality	Polyclonal
Isotype	Rabbit IgG
Clone Names	RB42859
Calculated MW	78402
Antigen Region	668-694

Additional Information

Gene ID	286151
Other Names	F-box only protein 43, Endogenous meiotic inhibitor 2, FBXO43, EMI2
Target/Specificity	This FBXO43 antibody is generated from rabbits immunized with a KLH conjugated synthetic peptide between 668-694 amino acids from the C-terminal region of human FBXO43.
Dilution	WB~~1:1000 E~~Use at an assay dependent concentration.
Format	Purified polyclonal antibody supplied in PBS with 0.09% (W/V) sodium azide. This antibody is purified through a protein A column, followed by peptide affinity purification.
Storage	Maintain refrigerated at 2-8°C for up to 2 weeks. For long term storage store at -20°C in small aliquots to prevent freeze-thaw cycles.
Precautions	FBXO43 Antibody (C-term) is for research use only and not for use in diagnostic or therapeutic procedures.

Protein Information

Name	FBXO43
Synonyms	EMI2
Function	Required to establish and maintain the arrest of oocytes at the second meiotic metaphase until fertilization. Acts by inhibiting the anaphase-promoting complex/cyclosome (APC/C) ubiquitin ligase. Probably

recognizes and binds to some phosphorylated proteins and promotes their ubiquitination and degradation (PubMed:[34052850](#), PubMed:[34595750](#)). Plays a vital role in modulating the ubiquitilation of CCNB1 and CDK1 during gametogenesis.

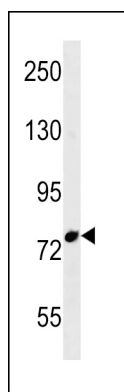
Tissue Location

Expressed in the testis.

Background

Required to establish and maintain the arrest of oocytes at the second meiotic metaphase until fertilization. Probably acts by inhibiting the anaphase-promoting complex/cyclosome (APC/C) ubiquitin ligase. Probably recognizes and binds to some phosphorylated proteins and promotes their ubiquitination and degradation (Probable).

Images



FBXO43 Antibody (C-term) (Cat. #AP20371b) western blot analysis in Ramos cell line lysates (35ug/lane). This demonstrates the FBXO43 antibody detected the FBXO43 protein (arrow).

Please note: All products are 'FOR RESEARCH USE ONLY. NOT FOR USE IN DIAGNOSTIC OR THERAPEUTIC PROCEDURES'.