

# IRX1 Antibody (N-term)

Affinity Purified Rabbit Polyclonal Antibody (Pab)

Catalog # AP20375a

## Product Information

---

<b>Application</b>	WB, E
<b>Primary Accession</b>	<a href="#">P78414</a>
<b>Other Accession</b>	<a href="#">P81068</a>
<b>Reactivity</b>	Human, Mouse
<b>Predicted</b>	Mouse
<b>Host</b>	Rabbit
<b>Clonality</b>	Polyclonal
<b>Isotype</b>	Rabbit IgG
<b>Clone Names</b>	RB42865
<b>Calculated MW</b>	49621
<b>Antigen Region</b>	2-28

## Additional Information

---

<b>Gene ID</b>	79192
<b>Other Names</b>	Iroquois-class homeodomain protein IRX-1, Homeodomain protein IRXA1, Iroquois homeobox protein 1, IRX1, IRXA1
<b>Target/Specificity</b>	This IRX1 antibody is generated from rabbits immunized with a KLH conjugated synthetic peptide between 2-28 amino acids from the N-terminal region of human IRX1.
<b>Dilution</b>	WB~~1:1000 E~~Use at an assay dependent concentration.
<b>Format</b>	Purified polyclonal antibody supplied in PBS with 0.09% (W/V) sodium azide. This antibody is purified through a protein A column, followed by peptide affinity purification.
<b>Storage</b>	Maintain refrigerated at 2-8°C for up to 2 weeks. For long term storage store at -20°C in small aliquots to prevent freeze-thaw cycles.
<b>Precautions</b>	IRX1 Antibody (N-term) is for research use only and not for use in diagnostic or therapeutic procedures.

## Protein Information

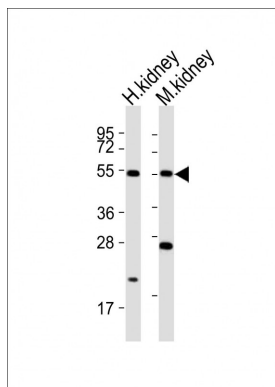
---

<b>Name</b>	IRX1
<b>Synonyms</b>	IRXA1

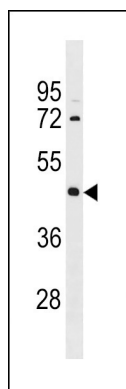
## Background

IRX1 is a member of the Iroquois homeobox gene family. The genes from this family have multiple roles in vertebrate development. The gene encoding IRX1 is expressed in the brain, lung and gut during specific stages of mouse development.

## Images



All lanes : Anti-IRX1 Antibody (N-term) at 1:2000 dilution  
Lane 1: human kidney lysates Lane 2: mouse kidney lysates  
Lysates/proteins at 20 µg per lane. Secondary Goat Anti-Rabbit IgG, (H+L), Peroxidase conjugated at 1/10000 dilution  
Predicted band size : 50 kDa  
Blocking/Dilution buffer: 5% NFDM/TBST.



IRX1 Antibody (N-term) (Cat. #AP20375a) western blot analysis in MDA-MB453 cell line lysates (35ug/lane). This demonstrates the IRX1 antibody detected the IRX1 protein (arrow).

Please note: All products are 'FOR RESEARCH USE ONLY. NOT FOR USE IN DIAGNOSTIC OR THERAPEUTIC PROCEDURES'.