

L3MBTL3 Antibody (N-term)

Affinity Purified Rabbit Polyclonal Antibody (Pab)

Catalog # AP20376a

Product Information

Application	WB, E
Primary Accession	Q96JM7
Reactivity	Human
Host	Rabbit
Clonality	Polyclonal
Isotype	Rabbit IgG
Clone Names	RB42866
Calculated MW	88337
Antigen Region	90-116

Additional Information

Gene ID	84456
Other Names	Lethal(3)malignant brain tumor-like protein 3, H-l(3)mbt-like protein 3, L(3)mbt-like protein 3, MBT-1, L3MBTL3, KIAA1798, MBT1
Target/Specificity	This L3MBTL3 antibody is generated from rabbits immunized with a KLH conjugated synthetic peptide between 90-116 amino acids from the N-terminal region of human L3MBTL3.
Dilution	WB~~1:1000 E~~Use at an assay dependent concentration.
Format	Purified polyclonal antibody supplied in PBS with 0.09% (W/V) sodium azide. This antibody is purified through a protein A column, followed by peptide affinity purification.
Storage	Maintain refrigerated at 2-8°C for up to 2 weeks. For long term storage store at -20°C in small aliquots to prevent freeze-thaw cycles.
Precautions	L3MBTL3 Antibody (N-term) is for research use only and not for use in diagnostic or therapeutic procedures.

Protein Information

Name	L3MBTL3 (HGNC:23035)
Synonyms	KIAA1798, MBT1
Function	Is a negative regulator of Notch target genes expression, required for RBPJ-mediated transcriptional repression (PubMed: 29030483). It recruits

KDM1A to Notch-responsive elements and promotes KDM1A-mediated H3K4me demethylation (PubMed:[29030483](#)). Involved in the regulation of ubiquitin-dependent degradation of a set of methylated non-histone proteins, including SOX2, DNMT1 and E2F1. It acts as an adapter recruiting the CRL4-DCAF5 E3 ubiquitin ligase complex to methylated target proteins (PubMed:[29691401](#), PubMed:[30442713](#)). Required for normal maturation of myeloid progenitor cells (By similarity).

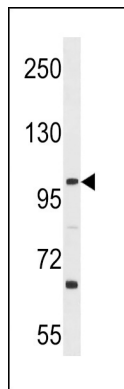
Cellular Location

Nucleus.

Background

Putative Polycomb group (PcG) protein. PcG proteins maintain the transcriptionally repressive state of genes, probably via a modification of chromatin, rendering it heritably changed in its expressibility. Required for normal maturation of myeloid progenitor cells (By similarity).

Images



L3MBTL3 Antibody (N-term) (Cat. #AP20376a) western blot analysis in Ramos cell line lysates (35ug/lane). This demonstrates the L3MBTL3 antibody detected the L3MBTL3 protein (arrow).

Please note: All products are 'FOR RESEARCH USE ONLY. NOT FOR USE IN DIAGNOSTIC OR THERAPEUTIC PROCEDURES'.