

TUBD1 Antibody (C-term)

Affinity Purified Rabbit Polyclonal Antibody (Pab)

Catalog # AP20378b

Product Information

Application	WB, E
Primary Accession	Q9UJT1
Other Accession	Q4R7T7
Reactivity	Human
Predicted	Monkey
Host	Rabbit
Clonality	Polyclonal
Isotype	Rabbit IgG
Clone Names	RB42875
Calculated MW	51034
Antigen Region	366-392

Additional Information

Gene ID	51174
Other Names	Tubulin delta chain, Delta-tubulin, TUBD1, TUBD
Target/Specificity	This TUBD1 antibody is generated from rabbits immunized with a KLH conjugated synthetic peptide between 366-392 amino acids from the C-terminal region of human TUBD1.
Dilution	WB~~1:1000 E~~Use at an assay dependent concentration.
Format	Purified polyclonal antibody supplied in PBS with 0.09% (W/V) sodium azide. This antibody is purified through a protein A column, followed by peptide affinity purification.
Storage	Maintain refrigerated at 2-8°C for up to 2 weeks. For long term storage store at -20°C in small aliquots to prevent freeze-thaw cycles.
Precautions	TUBD1 Antibody (C-term) is for research use only and not for use in diagnostic or therapeutic procedures.

Protein Information

Name	TUBD1
Synonyms	TUBD
Function	Acts as a positive regulator of hedgehog signaling and regulates ciliary

function.

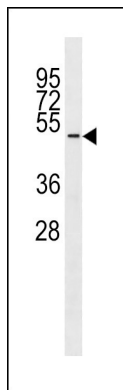
Cellular Location

Nucleus {ECO:0000250|UniProtKB:Q9R1K7}. Cytoplasm {ECO:0000250|UniProtKB:Q9R1K7}. Cytoplasm, cytoskeleton, microtubule organizing center, centrosome, centriole {ECO:0000250|UniProtKB:Q9R1K7}. Cell projection, cilium {ECO:0000250|UniProtKB:Q9R1K7}. Note=Associated with centrioles. Both cytoplasmic and nuclear. In the elongating spermatid it is associated with the manchette, a specialized microtubule system present during reshaping of the sperm head. {ECO:0000250|UniProtKB:Q9R1K7}

Background

In the elongating spermatid it is associated with the manchette, a specialized microtubule system present during reshaping of the sperm head (By similarity).

Images



TUBD1 Antibody (C-term) (Cat. #AP20378b) western blot analysis in ZR-75-1 cell line lysates (35ug/lane). This demonstrates the TUBD1 antibody detected the TUBD1 protein (arrow).

Please note: All products are 'FOR RESEARCH USE ONLY. NOT FOR USE IN DIAGNOSTIC OR THERAPEUTIC PROCEDURES'.