

CUTA Antibody (C-term)

Affinity Purified Rabbit Polyclonal Antibody (Pab)

Catalog # AP20379b

Product Information

Application	WB, E
Primary Accession	O60888
Other Accession	P69678
Reactivity	Human
Predicted	Bovine
Host	Rabbit
Clonality	Polyclonal
Isotype	Rabbit IgG
Clone Names	RB42878
Calculated MW	19116
Antigen Region	116-144

Additional Information

Gene ID	51596
Other Names	Protein CutA, Acetylcholinesterase-associated protein, Brain acetylcholinesterase putative membrane anchor, CUTA, ACHAP, C6orf82
Target/Specificity	This CUTA antibody is generated from rabbits immunized with a KLH conjugated synthetic peptide between 116-144 amino acids from the C-terminal region of human CUTA.
Dilution	WB~~1:1000 E~~Use at an assay dependent concentration.
Format	Purified polyclonal antibody supplied in PBS with 0.09% (W/V) sodium azide. This antibody is purified through a protein A column, followed by peptide affinity purification.
Storage	Maintain refrigerated at 2-8°C for up to 2 weeks. For long term storage store at -20°C in small aliquots to prevent freeze-thaw cycles.
Precautions	CUTA Antibody (C-term) is for research use only and not for use in diagnostic or therapeutic procedures.

Protein Information

Name	CUTA
Synonyms	ACHAP, C6orf82

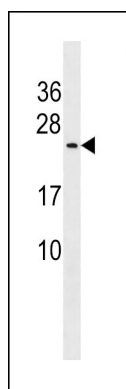
Function May form part of a complex of membrane proteins attached to acetylcholinesterase (AChE).

Tissue Location Ubiquitous. Widely expressed in brain.

Background

May forms part of a complex of membrane proteins attached to acetylcholinesterase (AChE).

Images



CUTA Antibody (C-term) (Cat. #AP20379b) western blot analysis in 293 cell line lysates (35ug/lane). This demonstrates the CUTA antibody detected the CUTA protein (arrow).

Please note: All products are 'FOR RESEARCH USE ONLY. NOT FOR USE IN DIAGNOSTIC OR THERAPEUTIC PROCEDURES'.