

LRP2BP Antibody (Center)

Affinity Purified Rabbit Polyclonal Antibody (Pab)

Catalog # AP20390c

Product Information

Application	WB, E
Primary Accession	Q9P2M1
Other Accession	Q4R3N2
Reactivity	Human
Predicted	Monkey
Host	Rabbit
Clonality	Polyclonal
Isotype	Rabbit IgG
Clone Names	RB42904
Calculated MW	39780
Antigen Region	126-152

Additional Information

Gene ID	55805
Other Names	LRP2-binding protein, Megalin-binding protein, MegBP, LRP2BP, KIAA1325
Target/Specificity	This LRP2BP antibody is generated from rabbits immunized with a KLH conjugated synthetic peptide between 126-152 amino acids from the Central region of human LRP2BP.
Dilution	WB~~1:1000 E~~Use at an assay dependent concentration.
Format	Purified polyclonal antibody supplied in PBS with 0.09% (W/V) sodium azide. This antibody is purified through a protein A column, followed by peptide affinity purification.
Storage	Maintain refrigerated at 2-8°C for up to 2 weeks. For long term storage store at -20°C in small aliquots to prevent freeze-thaw cycles.
Precautions	LRP2BP Antibody (Center) is for research use only and not for use in diagnostic or therapeutic procedures.

Protein Information

Name	LRP2BP
Synonyms	KIAA1325
Function	May act as an adapter that regulates LRP2 function.

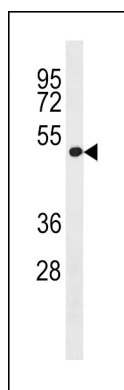
Cellular Location

Cytoplasm. Note=Detected in a vesicular staining pattern close to the plasma membrane and throughout the cytoplasm

Background

May act as an adapter that regulates LRP2 function.

Images



LRP2BP Antibody (Center) (Cat. #AP20390c) western blot analysis in A549 cell line lysates (35ug/lane). This demonstrates the LRP2BP antibody detected the LRP2BP protein (arrow).

Please note: All products are 'FOR RESEARCH USE ONLY. NOT FOR USE IN DIAGNOSTIC OR THERAPEUTIC PROCEDURES'.