

MRGPRX4 Antibody (C-term)

Affinity Purified Rabbit Polyclonal Antibody (Pab)

Catalog # AP20392b

Product Information

Application	WB, E
Primary Accession	Q96LA9
Reactivity	Human
Host	Rabbit
Clonality	Polyclonal
Isotype	Rabbit IgG
Clone Names	RB42906
Calculated MW	36461
Antigen Region	278-304

Additional Information

Gene ID	117196
Other Names	Mas-related G-protein coupled receptor member X4, Sensory neuron-specific G-protein coupled receptor 5/6, MRGPRX4, MRGX4, SNSR5, SNSR6
Target/Specificity	This MRGPRX4 antibody is generated from rabbits immunized with a KLH conjugated synthetic peptide between 278-304 amino acids from the C-terminal region of human MRGPRX4.
Dilution	WB~~1:1000 E~~Use at an assay dependent concentration.
Format	Purified polyclonal antibody supplied in PBS with 0.09% (W/V) sodium azide. This antibody is purified through a protein A column, followed by peptide affinity purification.
Storage	Maintain refrigerated at 2-8°C for up to 2 weeks. For long term storage store at -20°C in small aliquots to prevent freeze-thaw cycles.
Precautions	MRGPRX4 Antibody (C-term) is for research use only and not for use in diagnostic or therapeutic procedures.

Protein Information

Name	MRGPRX4
Synonyms	MRGX4, SNSR5, SNSR6
Function	Orphan receptor. Probably involved in the function of nociceptive neurons. May regulate nociceptor function and/or development, including the

sensation or modulation of pain. Potently activated by enkephalins (By similarity).

Cellular Location

Cell membrane; Multi-pass membrane protein.

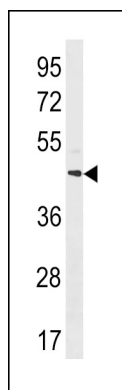
Tissue Location

Uniquely localized in a subset of small dorsal root and trigeminal sensory neurons.

Background

Orphan receptor. Probably involved in the function of nociceptive neurons. May regulate nociceptor function and/or development, including the sensation or modulation of pain. Potently activated by enkephalins (By similarity).

Images



MRGPRX4 Antibody (C-term) (Cat. #AP20392b) western blot analysis in human Uterus tissue lysates (35ug/lane). This demonstrates the MRGPRX4 antibody detected the MRGPRX4 protein (arrow).

Please note: All products are 'FOR RESEARCH USE ONLY. NOT FOR USE IN DIAGNOSTIC OR THERAPEUTIC PROCEDURES'.