

# SPAG6 Antibody (C-term)

Affinity Purified Rabbit Polyclonal Antibody (Pab)

Catalog # AP20398b

## Product Information

---

<b>Application</b>	WB, E
<b>Primary Accession</b>	<a href="#">Q75602</a>
<b>Other Accession</b>	<a href="#">Q9JLI7</a>
<b>Reactivity</b>	Human
<b>Predicted</b>	Mouse
<b>Host</b>	Rabbit
<b>Clonality</b>	Polyclonal
<b>Isotype</b>	Rabbit IgG
<b>Clone Names</b>	RB42917
<b>Calculated MW</b>	55476
<b>Antigen Region</b>	422-448

## Additional Information

---

<b>Gene ID</b>	9576
<b>Other Names</b>	Sperm-associated antigen 6, Protein PF16 homolog, Repro-SA-1, Sperm flagellar protein, SPAG6, PF16
<b>Target/Specificity</b>	This SPAG6 antibody is generated from rabbits immunized with a KLH conjugated synthetic peptide between 422-448 amino acids from the C-terminal region of human SPAG6.
<b>Dilution</b>	WB~~1:1000 E~~Use at an assay dependent concentration.
<b>Format</b>	Purified polyclonal antibody supplied in PBS with 0.09% (W/V) sodium azide. This antibody is purified through a protein A column, followed by peptide affinity purification.
<b>Storage</b>	Maintain refrigerated at 2-8°C for up to 2 weeks. For long term storage store at -20°C in small aliquots to prevent freeze-thaw cycles.
<b>Precautions</b>	SPAG6 Antibody (C-term) is for research use only and not for use in diagnostic or therapeutic procedures.

## Protein Information

---

<b>Name</b>	SPAG6
<b>Synonyms</b>	PF16

<b>Function</b>	Important for structural integrity of the central apparatus in the sperm tail and for flagellar motility.
<b>Cellular Location</b>	Cytoplasm, cytoskeleton. Cell projection, cilium, flagellum. Cytoplasm, cytoskeleton, cilium axoneme {ECO:0000250 UniProtKB:Q9JLI7}. Note=Associated with microtubules Detected on the sperm flagellum (PubMed:10493827). Localizes in the cilium axoneme in a SPEF1-dependent manner (By similarity) {ECO:0000250 UniProtKB:Q9JLI7, ECO:0000269 PubMed:10493827}
<b>Tissue Location</b>	Highly expressed in testis.

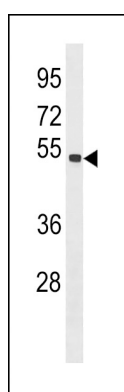
## Background

---

Important for structural integrity of the central apparatus in the sperm tail and for flagellar motility (By similarity).

## Images

---



SPAG6 Antibody (C-term) (Cat. #AP20398b) western blot analysis in MDA-MB453 cell line lysates (35ug/lane). This demonstrates the SPAG6 antibody detected the SPAG6 protein (arrow).

## Citations

---

- [Transient scrotal hyperthermia affects human sperm DNA integrity, sperm apoptosis, and sperm protein expression.](#)

Please note: All products are 'FOR RESEARCH USE ONLY. NOT FOR USE IN DIAGNOSTIC OR THERAPEUTIC PROCEDURES'.