

OLFM3 Antibody (N-term)

Affinity Purified Rabbit Polyclonal Antibody (Pab)

Catalog # AP20399a

Product Information

| | |
|--------------------------|---|
| Application | WB, E |
| Primary Accession | Q96PB7 |
| Other Accession | P63057 , P63056 |
| Reactivity | Human, Mouse |
| Predicted | Rat |
| Host | Rabbit |
| Clonality | Polyclonal |
| Isotype | Rabbit IgG |
| Clone Names | RB42926 |
| Calculated MW | 54930 |
| Antigen Region | 114-142 |

Additional Information

| | |
|---------------------------|--|
| Gene ID | 118427 |
| Other Names | Noelin-3, Olfactomedin-3, Optimedin, OLFM3, NOE3 |
| Target/Specificity | This OLFM3 antibody is generated from rabbits immunized with a KLH conjugated synthetic peptide between 114-142 amino acids from the N-terminal region of human OLFM3. |
| Dilution | WB~~1:1000 E~~Use at an assay dependent concentration. |
| Format | Purified polyclonal antibody supplied in PBS with 0.09% (W/V) sodium azide. This antibody is purified through a protein A column, followed by peptide affinity purification. |
| Storage | Maintain refrigerated at 2-8°C for up to 2 weeks. For long term storage store at -20°C in small aliquots to prevent freeze-thaw cycles. |
| Precautions | OLFM3 Antibody (N-term) is for research use only and not for use in diagnostic or therapeutic procedures. |

Protein Information

| | |
|--------------------------|--------------------|
| Name | OLFM3 |
| Synonyms | NOE3 |
| Cellular Location | Secreted. Synapse. |

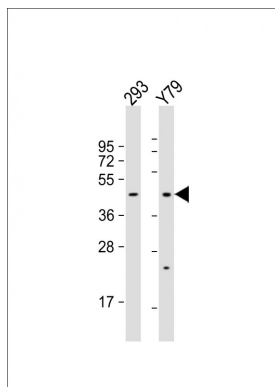
Tissue Location

In the eye, expressed in trabecular meshwork and neural retina; in non-ocular tissues, expressed in brain and lung

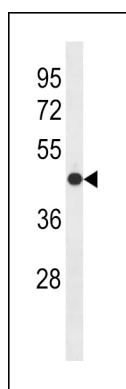
Background

The function of this protein remains unknown.

Images



All lanes : Anti-OLFM3 Antibody (N-term) at 1:1000 dilution Lane 1: 293 whole cell lysate Lane 2: Y79 whole cell lysate Lysates/proteins at 20 µg per lane. Secondary Goat Anti-Rabbit IgG, (H+L), Peroxidase conjugated at 1/10000 dilution. Predicted band size : 55 kDa Blocking/Dilution buffer: 5% NFDM/TBST.



OLFM3 Antibody (N-term) (Cat. #AP20399a) western blot analysis in mouse cerebellum tissue lysates (35ug/lane). This demonstrates the OLFM3 antibody detected the OLFM3 protein (arrow).

Please note: All products are 'FOR RESEARCH USE ONLY. NOT FOR USE IN DIAGNOSTIC OR THERAPEUTIC PROCEDURES'.