

# GOLGA6L2 Antibody (N-term)

Affinity Purified Rabbit Polyclonal Antibody (Pab)

Catalog # AP20402a

## Product Information

---

Application	WB, E
Primary Accession	<a href="#">Q8N9W4</a>
Reactivity	Human
Host	Rabbit
Clonality	Polyclonal
Isotype	Rabbit IgG
Clone Names	RB42934
Calculated MW	100610
Antigen Region	104-130

## Additional Information

---

Gene ID	283685
Other Names	Golgin subfamily A member 6-like protein 2, GOLGA6L2
Target/Specificity	This GOLGA6L2 antibody is generated from rabbits immunized with a KLH conjugated synthetic peptide between 104-130 amino acids from the N-terminal region of human GOLGA6L2.
Dilution	WB~~1:1000 E~~Use at an assay dependent concentration.
Format	Purified polyclonal antibody supplied in PBS with 0.09% (W/V) sodium azide. This antibody is purified through a protein A column, followed by peptide affinity purification.
Storage	Maintain refrigerated at 2-8°C for up to 2 weeks. For long term storage store at -20°C in small aliquots to prevent freeze-thaw cycles.
Precautions	GOLGA6L2 Antibody (N-term) is for research use only and not for use in diagnostic or therapeutic procedures.

## Protein Information

---

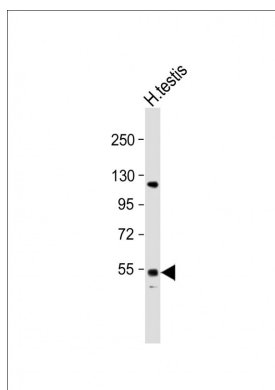
Name	GOLGA6L2
------	----------

## Background

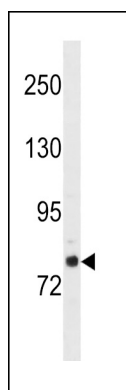
---

The function of this protein remains unknown.

## Images



Anti-GOLGA6L2 Antibody (N-term) at 1:1000 dilution + human testis lysate Lysates/proteins at 20 µg per lane. Secondary Goat Anti-Rabbit IgG, (H+L), Peroxidase conjugated at 1/10000 dilution. Predicted band size : 79 kDa Blocking/Dilution buffer: 5% NFDM/TBST.



GOLGA6L2 Antibody (N-term) (Cat. #AP20402a) western blot analysis in NCI-H460 cell line lysates (35ug/lane). This demonstrates the GOLGA6L2 antibody detected the GOLGA6L2 protein (arrow).

Please note: All products are 'FOR RESEARCH USE ONLY. NOT FOR USE IN DIAGNOSTIC OR THERAPEUTIC PROCEDURES'.