

LMAN2L Antibody (C-term)

Affinity Purified Rabbit Polyclonal Antibody (Pab)
Catalog # AP20404b

Product Information

Application	WB, E
Primary Accession	Q9H0V9
Reactivity	Human
Host	Rabbit
Clonality	Polyclonal
Isotype	Rabbit IgG
Clone Names	RB42937
Calculated MW	39711
Antigen Region	322-348

Additional Information

Gene ID	81562
Other Names	VIP36-like protein, Lectin mannose-binding 2-like, LMAN2-like protein, LMAN2L, VIPL
Target/Specificity	This LMAN2L antibody is generated from rabbits immunized with a KLH conjugated synthetic peptide between 322-348 amino acids from the C-terminal region of human LMAN2L.
Dilution	WB~~1:1000 E~~Use at an assay dependent concentration.
Format	Purified polyclonal antibody supplied in PBS with 0.09% (W/V) sodium azide. This antibody is purified through a protein A column, followed by peptide affinity purification.
Storage	Maintain refrigerated at 2-8°C for up to 2 weeks. For long term storage store at -20°C in small aliquots to prevent freeze-thaw cycles.
Precautions	LMAN2L Antibody (C-term) is for research use only and not for use in diagnostic or therapeutic procedures.

Protein Information

Name	LMAN2L
Synonyms	VIPL
Function	May be involved in the regulation of export from the endoplasmic reticulum of a subset of glycoproteins. May function as a regulator of ERGIC-53.

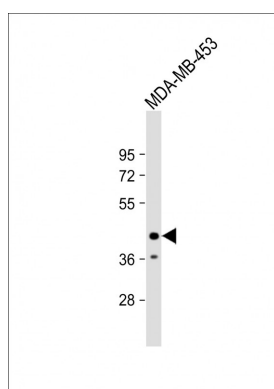
Cellular Location Endoplasmic reticulum membrane; Single-pass type I membrane protein. Golgi apparatus membrane; Single-pass type I membrane protein. Note=Predominantly found in the endoplasmic reticulum. Partly found in the Golgi

Tissue Location Expressed in numerous tissues. Highest expression in skeletal muscle and kidney, intermediate levels in heart, liver and placenta, low levels in brain, thymus, spleen, small intestine and lung.

Background

May be involved in the regulation of export from the endoplasmic reticulum of a subset of glycoproteins. May function as a regulator of ERGIC-53.

Images



Anti-LMAN2L Antibody (C-term) at 1:1000 dilution + MDA-MB-453 whole cell lysate Lysates/proteins at 20 μ g per lane. Secondary Goat Anti-Rabbit IgG, (H+L), Peroxidase conjugated at 1/10000 dilution. Predicted band size : 40 kDa Blocking/Dilution buffer: 5% NFDm/TBST.

Please note: All products are 'FOR RESEARCH USE ONLY. NOT FOR USE IN DIAGNOSTIC OR THERAPEUTIC PROCEDURES'.