

# MTCH1 Antibody (Center)

Affinity Purified Rabbit Polyclonal Antibody (Pab)

Catalog # AP20405c

## Product Information

---

Application	WB, E
Primary Accession	<a href="#">Q9NZJ7</a>
Other Accession	<a href="#">Q791T5</a>
Reactivity	Human
Predicted	Mouse
Host	Rabbit
Clonality	Polyclonal
Isotype	Rabbit IgG
Clone Names	RB42941
Calculated MW	41544
Antigen Region	151-177

## Additional Information

---

Gene ID	23787
Other Names	Mitochondrial carrier homolog 1, Presenilin-associated protein, MTCH1, PSAP
Target/Specificity	This MTCH1 antibody is generated from rabbits immunized with a KLH conjugated synthetic peptide between 151-177 amino acids from the Central region of human MTCH1.
Dilution	WB~~1:1000 E~~Use at an assay dependent concentration.
Format	Purified polyclonal antibody supplied in PBS with 0.09% (W/V) sodium azide. This antibody is purified through a protein A column, followed by peptide affinity purification.
Storage	Maintain refrigerated at 2-8°C for up to 2 weeks. For long term storage store at -20°C in small aliquots to prevent freeze-thaw cycles.
Precautions	MTCH1 Antibody (Center) is for research use only and not for use in diagnostic or therapeutic procedures.

## Protein Information

---

Name	MTCH1 {ECO:0000303 PubMed:36264797, ECO:0000312 HGNC:HGNC:17586}
Function	Protein insertase that mediates insertion of transmembrane proteins into the mitochondrial outer membrane (PubMed: <a href="#">36264797</a> ). Catalyzes insertion

of proteins with alpha-helical transmembrane regions, such as signal-anchored, tail-anchored and multi-pass membrane proteins (By similarity). Does not mediate insertion of beta-barrel transmembrane proteins (By similarity). May play a role in apoptosis (PubMed:[12377771](#)).

<b>Cellular Location</b>	Mitochondrion outer membrane; Multi-pass membrane protein
<b>Tissue Location</b>	Widely expressed with a predominant expression in brain.

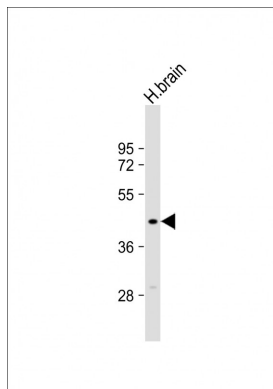
## Background

---

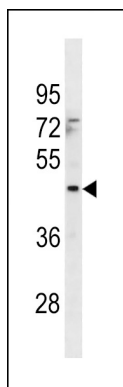
Potential mitochondrial transporter. May play a role in apoptosis.

## Images

---



Anti-MTCH1 Antibody (Center) at 1:1000 dilution + human brain lysate Lysates/proteins at 20 µg per lane. Secondary Goat Anti-Rabbit IgG, (H+L), Peroxidase conjugated at 1/10000 dilution. Predicted band size : 42 kDa  
Blocking/Dilution buffer: 5% NFDM/TBST.



MTCH1 Antibody (Center) (Cat. #AP20405c) western blot analysis in 293 cell line lysates (35ug/lane). This demonstrates the MTCH1 antibody detected the MTCH1 protein (arrow).

Please note: All products are 'FOR RESEARCH USE ONLY. NOT FOR USE IN DIAGNOSTIC OR THERAPEUTIC PROCEDURES'.