

# CCNB1 Antibody (Center S126/S128)

Affinity Purified Rabbit Polyclonal Antibody (Pab)

Catalog # AP20409c

## Product Information

---

<b>Application</b>	WB, E
<b>Primary Accession</b>	<a href="#">P14635</a>
<b>Reactivity</b>	Human
<b>Host</b>	Rabbit
<b>Clonality</b>	Polyclonal
<b>Isotype</b>	Rabbit IgG
<b>Clone Names</b>	RB42995
<b>Calculated MW</b>	48337
<b>Antigen Region</b>	106-133

## Additional Information

---

<b>Gene ID</b>	891
<b>Other Names</b>	G2/mitotic-specific cyclin-B1, CCNB1, CCNB
<b>Target/Specificity</b>	This CCNB1 antibody is generated from rabbits immunized with a KLH conjugated synthetic peptide between 106-133 amino acids from the Central region of human CCNB1.
<b>Dilution</b>	WB~~1:1000 E~~Use at an assay dependent concentration.
<b>Format</b>	Purified polyclonal antibody supplied in PBS with 0.09% (W/V) sodium azide. This antibody is purified through a protein A column, followed by peptide affinity purification.
<b>Storage</b>	Maintain refrigerated at 2-8°C for up to 2 weeks. For long term storage store at -20°C in small aliquots to prevent freeze-thaw cycles.
<b>Precautions</b>	CCNB1 Antibody (Center S126/S128) is for research use only and not for use in diagnostic or therapeutic procedures.

## Protein Information

---

<b>Name</b>	CCNB1
<b>Synonyms</b>	CCNB
<b>Function</b>	Essential for the control of the cell cycle at the G2/M (mitosis) transition.
<b>Cellular Location</b>	Cytoplasm. Nucleus. Cytoplasm, cytoskeleton, microtubule organizing center,

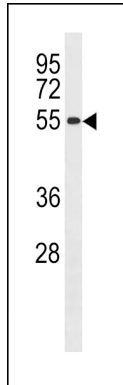
## Background

---

Essential for the control of the cell cycle at the G2/M (mitosis) transition.

## Images

---



CCNB1 Antibody (Center S126/S128) (Cat. #AP20409c)  
western blot analysis in U251 cell line lysates  
(35ug/lane). This demonstrates the CCNB1 antibody  
detected the CCNB1 protein (arrow).

Please note: All products are 'FOR RESEARCH USE ONLY. NOT FOR USE IN DIAGNOSTIC OR THERAPEUTIC PROCEDURES'.