

# CCNB1 Antibody (C-term T321)

Affinity Purified Rabbit Polyclonal Antibody (Pab)

Catalog # AP20411b

## Product Information

---

<b>Application</b>	WB, E
<b>Primary Accession</b>	<a href="#">P14635</a>
<b>Other Accession</b>	<a href="#">P30276</a> , <a href="#">Q4R7A8</a> , <a href="#">O95067</a> , <a href="#">O77689</a> , <a href="#">P30277</a> , <a href="#">P24860</a> , <a href="#">Q08301</a>
<b>Reactivity</b>	Human
<b>Predicted</b>	Hamster, Mouse, Rat, Bovine, Monkey
<b>Host</b>	Rabbit
<b>Clonality</b>	Polyclonal
<b>Isotype</b>	Rabbit IgG
<b>Clone Names</b>	RB43001
<b>Calculated MW</b>	48337
<b>Antigen Region</b>	299-326

## Additional Information

---

<b>Gene ID</b>	891
<b>Other Names</b>	G2/mitotic-specific cyclin-B1, CCNB1, CCNB
<b>Target/Specificity</b>	This CCNB1 antibody is generated from rabbits immunized with a KLH conjugated synthetic peptide between 299-326 amino acids from the C-terminal region of human CCNB1.
<b>Dilution</b>	WB~~1:1000 E~~Use at an assay dependent concentration.
<b>Format</b>	Purified polyclonal antibody supplied in PBS with 0.09% (W/V) sodium azide. This antibody is purified through a protein A column, followed by peptide affinity purification.
<b>Storage</b>	Maintain refrigerated at 2-8°C for up to 2 weeks. For long term storage store at -20°C in small aliquots to prevent freeze-thaw cycles.
<b>Precautions</b>	CCNB1 Antibody (C-term T321) is for research use only and not for use in diagnostic or therapeutic procedures.

## Protein Information

---

<b>Name</b>	CCNB1
<b>Synonyms</b>	CCNB
<b>Function</b>	Essential for the control of the cell cycle at the G2/M (mitosis) transition.

**Cellular Location**

Cytoplasm. Nucleus. Cytoplasm, cytoskeleton, microtubule organizing center, centrosome

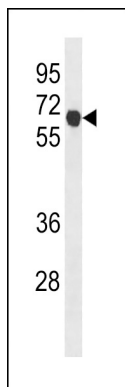
**Background**

---

Essential for the control of the cell cycle at the G2/M (mitosis) transition.

**Images**

---



CCNB1 Antibody (C-term T321) (Cat. #AP20411b) western blot analysis in K562 cell line lysates (35ug/lane). This demonstrates the CCNB1 antibody detected the CCNB1 protein (arrow).

Please note: All products are 'FOR RESEARCH USE ONLY. NOT FOR USE IN DIAGNOSTIC OR THERAPEUTIC PROCEDURES'.