

# CCNB2 Antibody (Center S92/T94)

Affinity Purified Rabbit Polyclonal Antibody (Pab)

Catalog # AP20412c

## Product Information

---

<b>Application</b>	WB, E
<b>Primary Accession</b>	<a href="#">Q95067</a>
<b>Other Accession</b>	<a href="#">Q4R7A8</a>
<b>Reactivity</b>	Human
<b>Predicted</b>	Monkey
<b>Host</b>	Rabbit
<b>Clonality</b>	Polyclonal
<b>Isotype</b>	Rabbit IgG
<b>Clone Names</b>	RB43004
<b>Calculated MW</b>	45282
<b>Antigen Region</b>	72-99

## Additional Information

---

<b>Gene ID</b>	9133
<b>Other Names</b>	G2/mitotic-specific cyclin-B2, CCNB2
<b>Target/Specificity</b>	This CCNB2 antibody is generated from rabbits immunized with a KLH conjugated synthetic peptide between 72-99 amino acids from the Central region of human CCNB2.
<b>Dilution</b>	WB~~1:1000 E~~Use at an assay dependent concentration.
<b>Format</b>	Purified polyclonal antibody supplied in PBS with 0.09% (W/V) sodium azide. This antibody is purified through a protein A column, followed by peptide affinity purification.
<b>Storage</b>	Maintain refrigerated at 2-8°C for up to 2 weeks. For long term storage store at -20°C in small aliquots to prevent freeze-thaw cycles.
<b>Precautions</b>	CCNB2 Antibody (Center S92/T94) is for research use only and not for use in diagnostic or therapeutic procedures.

## Protein Information

---

<b>Name</b>	CCNB2
<b>Function</b>	Essential for the control of the cell cycle at the G2/M (mitosis) transition.

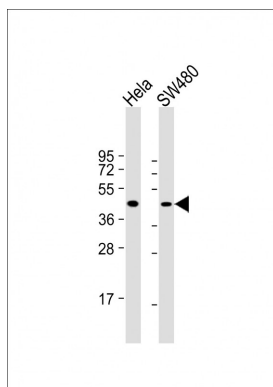
## Background

---

Essential for the control of the cell cycle at the G2/M (mitosis) transition.

## Images

---



All lanes : Anti-CCNB2 Antibody (Center S92/T94) at 1:1000 dilution Lane 1: HeLa whole cell lysate Lane 2: SW480 whole cell lysate Lysates/proteins at 20 µg per lane. Secondary Goat Anti-Rabbit IgG, (H+L), Peroxidase conjugated at 1/10000 dilution. Predicted band size : 45 kDa Blocking/Dilution buffer: 5% NFDM/TBST.

Please note: All products are 'FOR RESEARCH USE ONLY. NOT FOR USE IN DIAGNOSTIC OR THERAPEUTIC PROCEDURES'.