

CCNB2 Antibody (Center S204)

Affinity Purified Rabbit Polyclonal Antibody (Pab)

Catalog # AP20413c

Product Information

Application	WB, E
Primary Accession	Q95067
Other Accession	Q4R7A8
Reactivity	Human
Predicted	Monkey
Host	Rabbit
Clonality	Polyclonal
Isotype	Rabbit IgG
Clone Names	RB43006
Calculated MW	45282
Antigen Region	182-209

Additional Information

Gene ID	9133
Other Names	G2/mitotic-specific cyclin-B2, CCNB2
Target/Specificity	This CCNB2 antibody is generated from rabbits immunized with a KLH conjugated synthetic peptide between 182-209 amino acids from the Central region of human CCNB2.
Dilution	WB~~1:1000 E~~Use at an assay dependent concentration.
Format	Purified polyclonal antibody supplied in PBS with 0.09% (W/V) sodium azide. This antibody is purified through a protein A column, followed by peptide affinity purification.
Storage	Maintain refrigerated at 2-8°C for up to 2 weeks. For long term storage store at -20°C in small aliquots to prevent freeze-thaw cycles.
Precautions	CCNB2 Antibody (Center S204) is for research use only and not for use in diagnostic or therapeutic procedures.

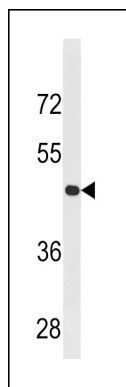
Protein Information

Name	CCNB2
Function	Essential for the control of the cell cycle at the G2/M (mitosis) transition.

Background

Essential for the control of the cell cycle at the G2/M (mitosis) transition.

Images



CCNB2 Antibody (Center S204) (Cat. #AP20413c) western blot analysis in U251 cell line lysates (35ug/lane). This demonstrates the CCNB2 antibody detected the CCNB2 protein (arrow).

Please note: All products are 'FOR RESEARCH USE ONLY. NOT FOR USE IN DIAGNOSTIC OR THERAPEUTIC PROCEDURES'.